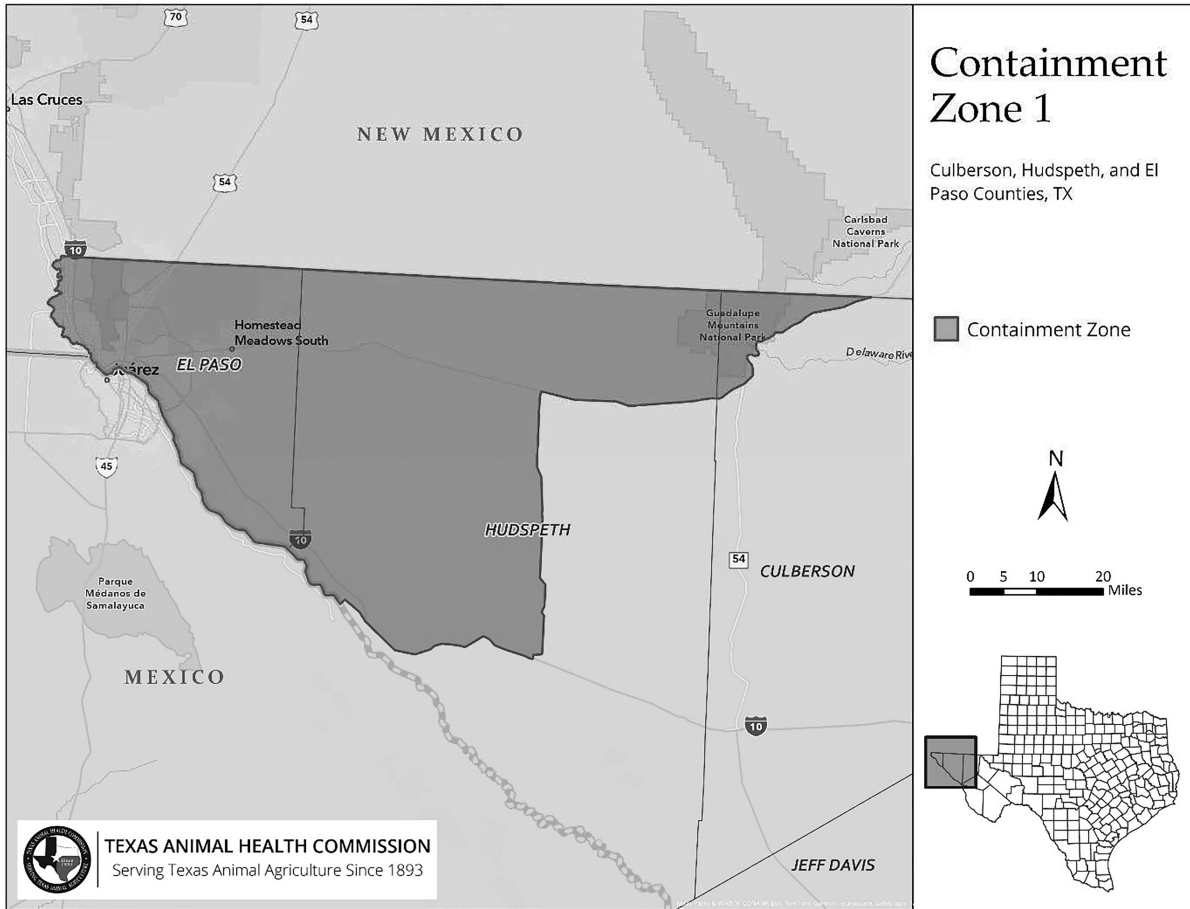


TABLES & GRAPHICS

Graphic images included in rules are published separately in this tables and graphics section. Graphic images are arranged in this section in the following order: Title Number, Part Number, Chapter Number and Section Number.

Graphic images are indicated in the text of the emergency, proposed, and adopted rules by the following tag: the word "Figure" followed by the TAC citation, rule number, and the appropriate subsection, paragraph, subparagraph, and so on.

Figure: 4 TAC §40.6(b)(1)



7/9/2024

Figure: 4 TAC §40.6(b)(2)

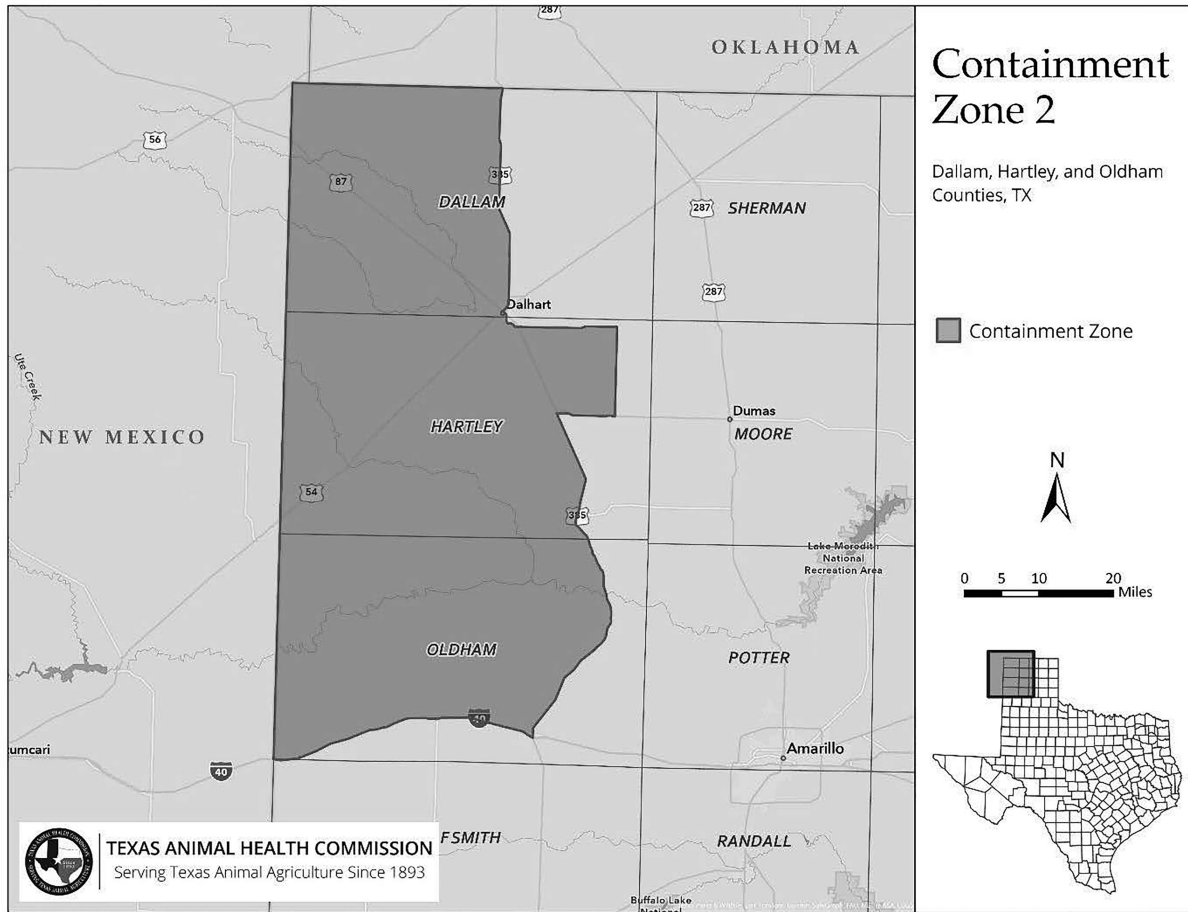


Figure: 4 TAC §40.6(b)(3)

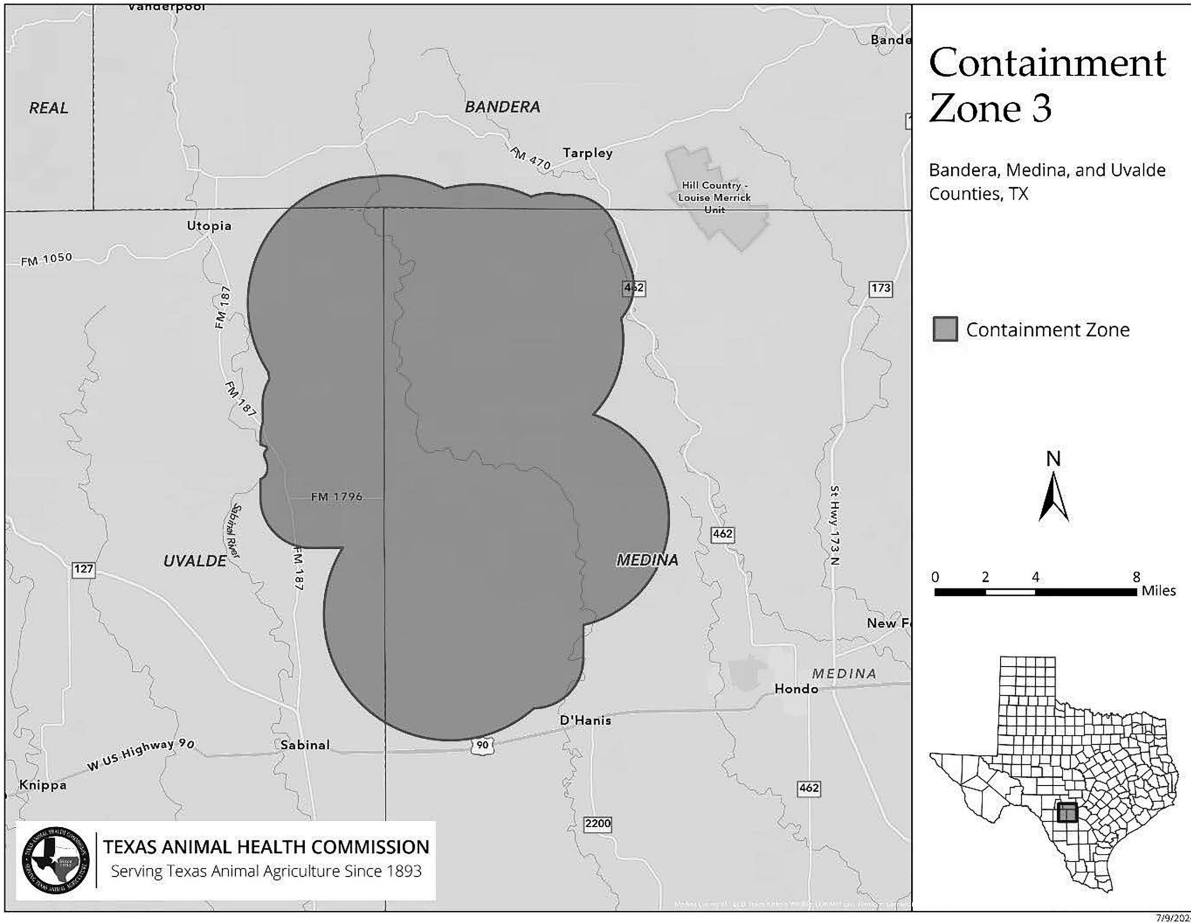


Figure: 4 TAC §40.6(b)(4)

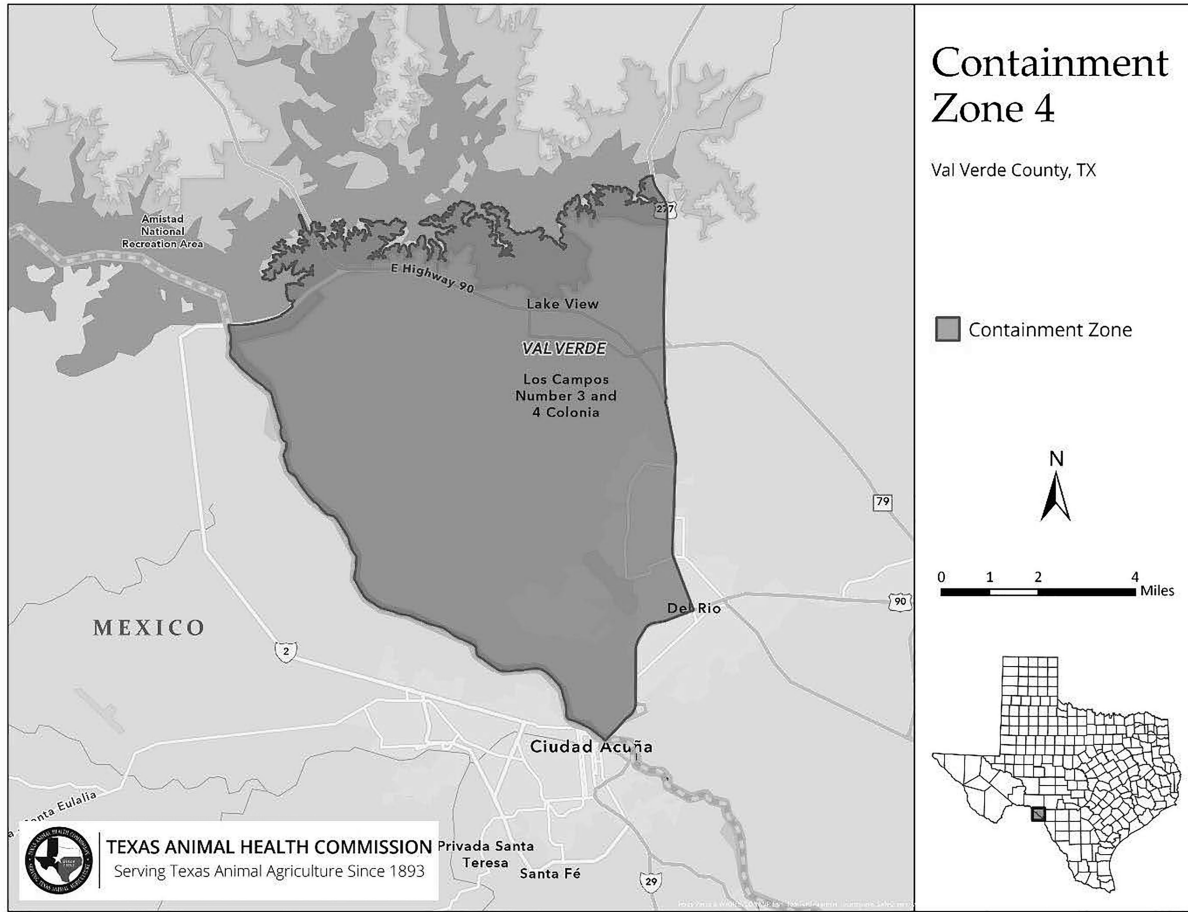


Figure: 4 TAC §40.6(b)(5)

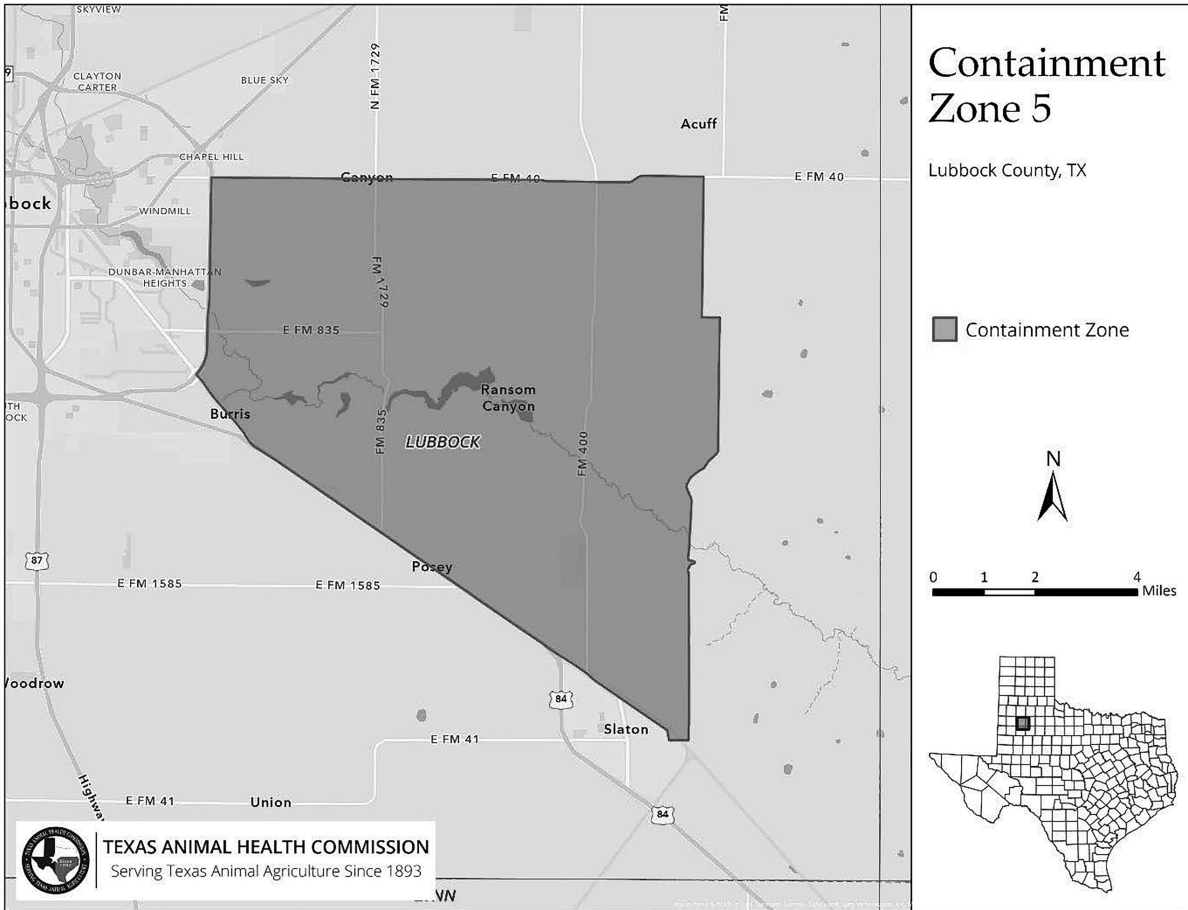


Figure: 4 TAC §40.6(b)(6)

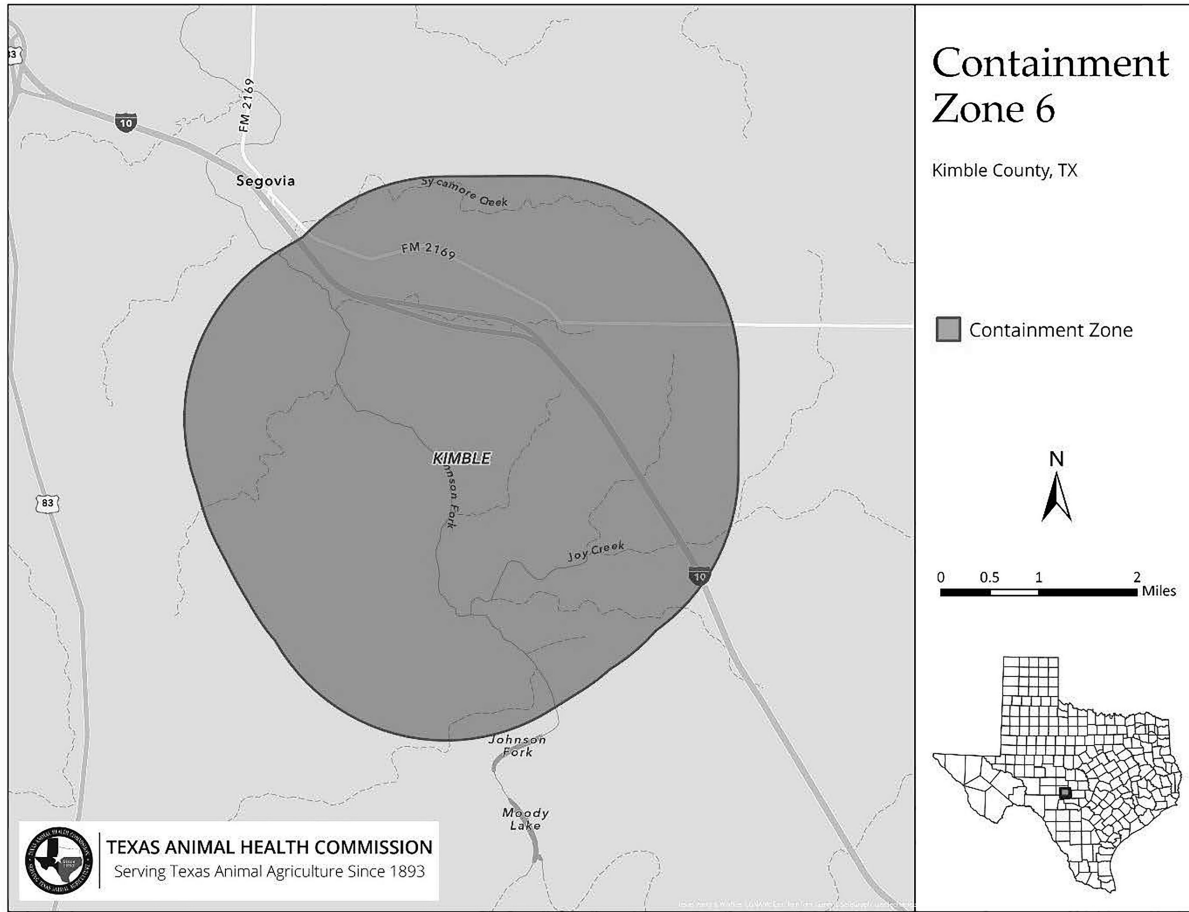


Figure: 4 TAC §40.6(b)(7)

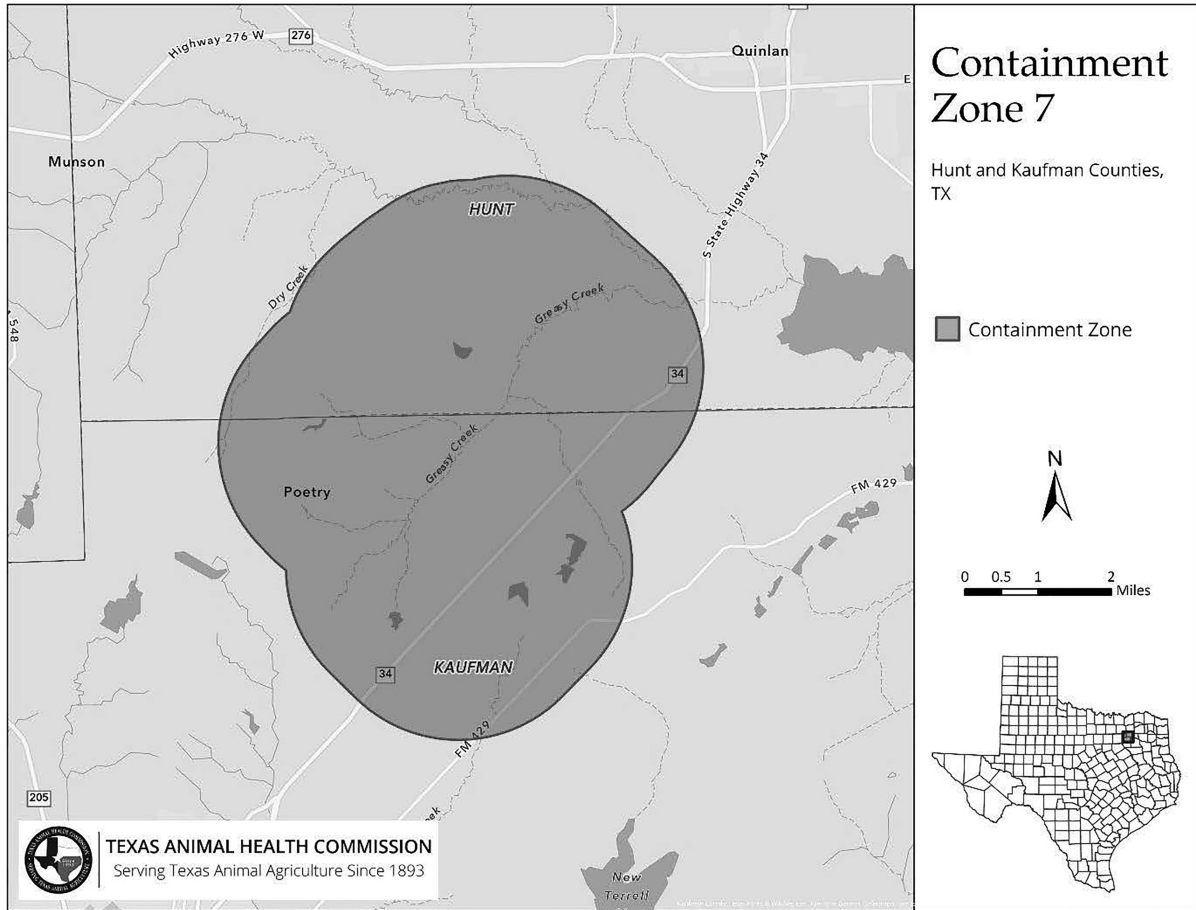


Figure: 4 TAC §40.6(b)(8)

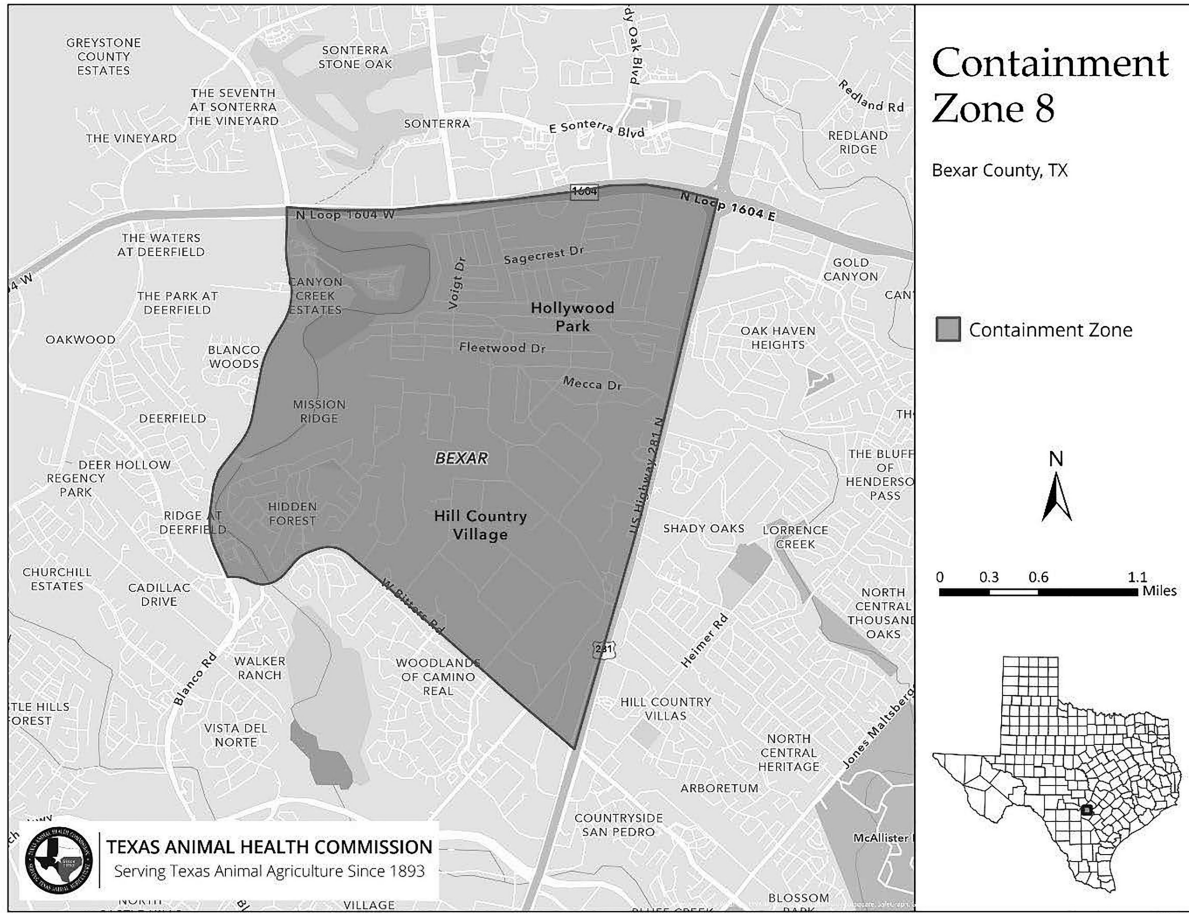


Figure: 4 TAC §40.6(b)(9)

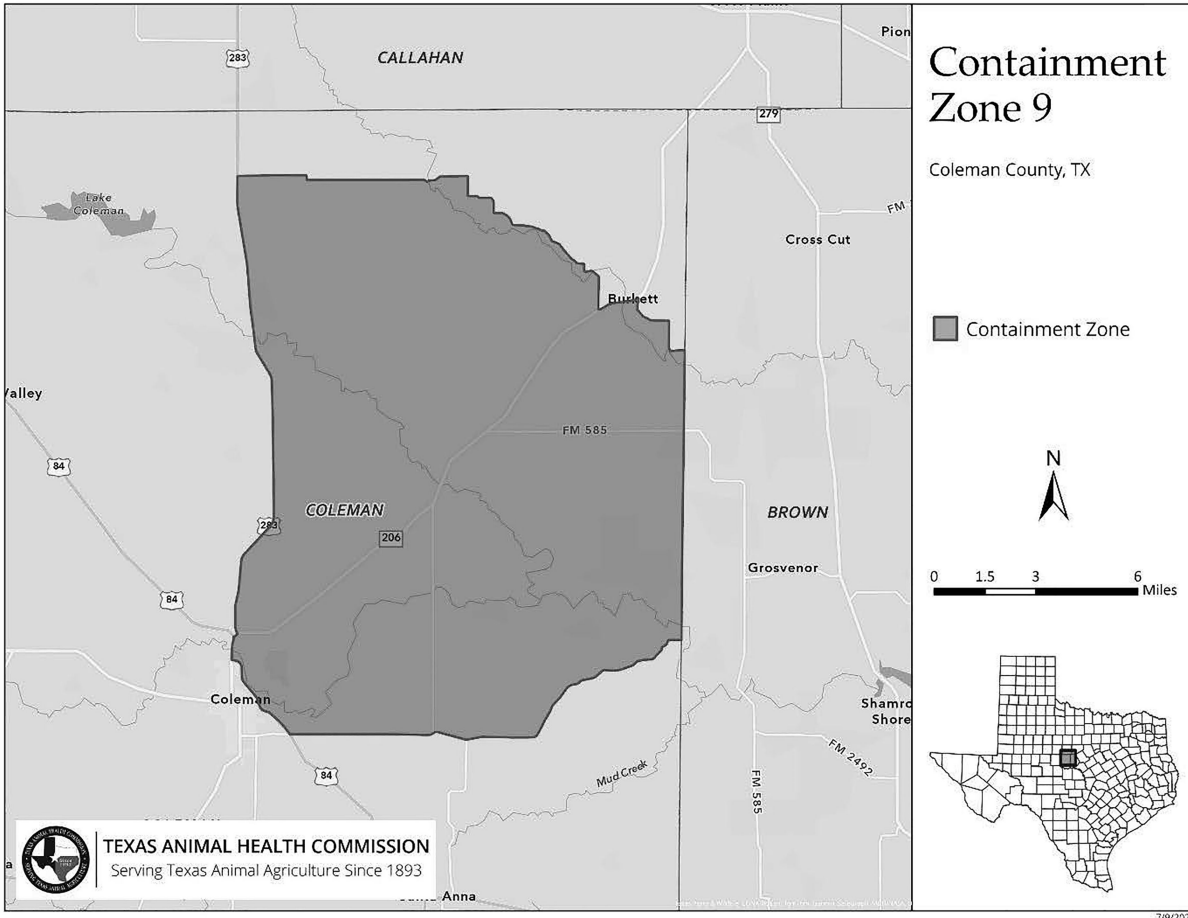


Figure: 4 TAC §40.6(b)(10)

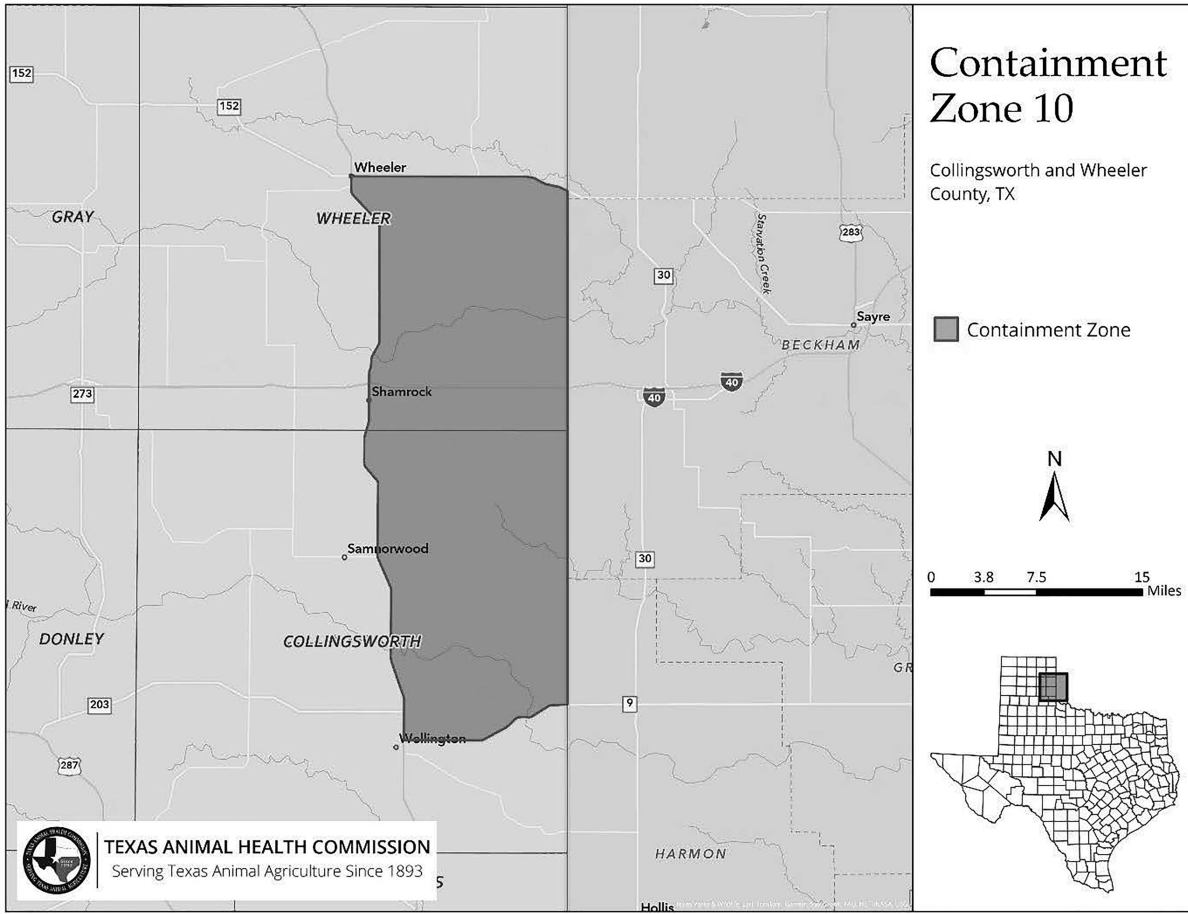


Figure: 16 TAC §401.315(e)

<u>MATCH FIELD 1</u>	<u>MATCH FIELD 2</u>	<u>ODDS</u>	<u>PRIZE CATEGORY</u>	<u>BASE PRIZE</u>	<u>% OF SALES</u>	<u>% OF PAYOUT</u>
5	1	290,472,336	JACKPOT	JACKPOT	27.63%	55.26%
5	0	12,629,232	SECOND	\$1,000,000	4.75%	9.50%
4	1	893,761	THIRD	\$10,000	0.67%	1.34%
4	0	38,859	FOURTH	\$500	0.77%	1.54%
3	1	13,965	FIFTH	\$200	0.86%	1.72%
3	0	607	SIXTH	\$10	0.99%	1.98%
2	1	665	SEVENTH	\$10	0.90%	1.80%
1	1	86	EIGHTH	\$7	4.89%	9.79%
0	1	35	NINTH	\$5	8.53%	17.06%
TOTAL		1:23.07			50.00%	100.00%

Figure 16 TAC §401.315(f)

<u>MULTIPLIER</u>	<u>FREQUENCY</u>	<u>ODDS</u>
10X	1	32.00
5X	2	16.00
4X	4	8.00
3X	10	3.20
2X	15	2.13
Field of:	32*	3.00**

*Total of frequencies

**Average Multiplier value

Figure: 16 TAC §401.315(g)(1)

<u>Terminal Type</u>	<u>Manual Entry</u>	<u>Playslip with No Payment Option Selected</u>
GT1200 (Retailer Terminal)	Default to CVO; retailer toggles to choose Annuity	Playslip Rejected with message "Playslip Rejected. Select Payment Option."
GT1200C (Retailer Terminal)	Default to CVO; retailer toggles to choose Annuity.	Playslip Rejected with message "Playslip Rejected. Select Payment Option."
Gemini (Self-service Lottery Ticket Vending Machine)	CVO only – designated on draw game Quick Pick buttons.	Playslip Rejected with message "Playslip Rejected. Select Payment Option."
GT20 (Self-service Lottery Ticket Vending Machine)	CVO only – designated on draw game Quick Pick buttons.	N/A
Third-party POS systems	CVO only – Quick Pick selections through authorized third-party POS systems.	N/A

Figure: 43 TAC §218.16(a)

Type of Vehicle	Minimum Insurance Level
1. Vehicles transporting household goods (gross vehicle weight, registered weight, or gross weight rating of 26,000 lbs. or less).	\$300,000
2. <u>Vehicles, including buses,</u> [Buses] designed or used to transport more than 15 people, but fewer than 27 people, <u>including the driver.</u>	\$500,000
3. <u>Vehicles, including buses,</u> [Buses] designed or used to transport 27 or more people, <u>including the driver.</u>	\$5,000,000
4. Commercial school buses, regardless of the passenger capacity as described in Transportation Code, §643.1015.	\$500,000
5. Farm trucks (gross vehicle weight, registered weight, or gross weight rating of 48,000 lbs. or more).	\$500,000
6. Commercial motor vehicles and vehicles transporting household goods (gross vehicle weight, registered weight, or gross weight rating in excess of 26,000 lbs.).	\$500,000
7. Commercial motor vehicles - Oil listed in 49 C.F.R. §172.101; hazardous waste, hazardous materials, <u>or</u> [and] hazardous substances defined in 49 C.F.R. §171.8 and listed in 49 C.F.R. §172.101, but not mentioned in items 8 or 9 of this table.	\$1,000,000
8. Commercial motor vehicles with a gross vehicle weight rating of 10,001 or more pounds - Hazardous substances, as defined in 49 C.F.R. §171.8, transported in <u>bulk</u> in cargo tanks, portable tanks, or hopper-type vehicles with capacities in <u>bulk</u> ; excess of 3,500 water gallons; or in bulk Division 1.1, 1.2, <u>or</u> [and] 1.3 materials; in <u>bulk</u> [-] Division 2.3, Hazard Zone A material; in <u>bulk</u> [-or] Division 6.1, Packing Group I, Hazard Zone A material; in bulk Division 2.1 or 2.2 <u>material</u> ; or highway route controlled quantities of a Class 7 material, as defined in 49 C.F.R. §173.403.	\$5,000,000
9. Commercial motor vehicles with a gross vehicle weight rating of less than 10,001 pounds – <u>In bulk</u> [Any quantity of] Division 1.1, 1.2, or 1.3 material; <u>in bulk</u> [any quantity of a] Division 2.3, Hazard Zone A <u>material</u> ; in <u>bulk</u> [-or] Division 6.1, Packing Group I, Hazard Zone A material; or highway route controlled quantities of a Class 7 material as defined in 49 C.F.R. §173.403.	\$5,000,000