

# TABLES & GRAPHICS

Graphic images included in rules are published separately in this tables and graphics section. Graphic images are arranged in this section in the following order: Title Number, Part Number, Chapter Number and Section Number.

Graphic images are indicated in the text of the emergency, proposed, and adopted rules by the following tag: the word "Figure" followed by the TAC citation, rule number, and the appropriate subsection, paragraph, subparagraph, and so on.

Figure: 4 TAC §40.6(b)(1)(I)

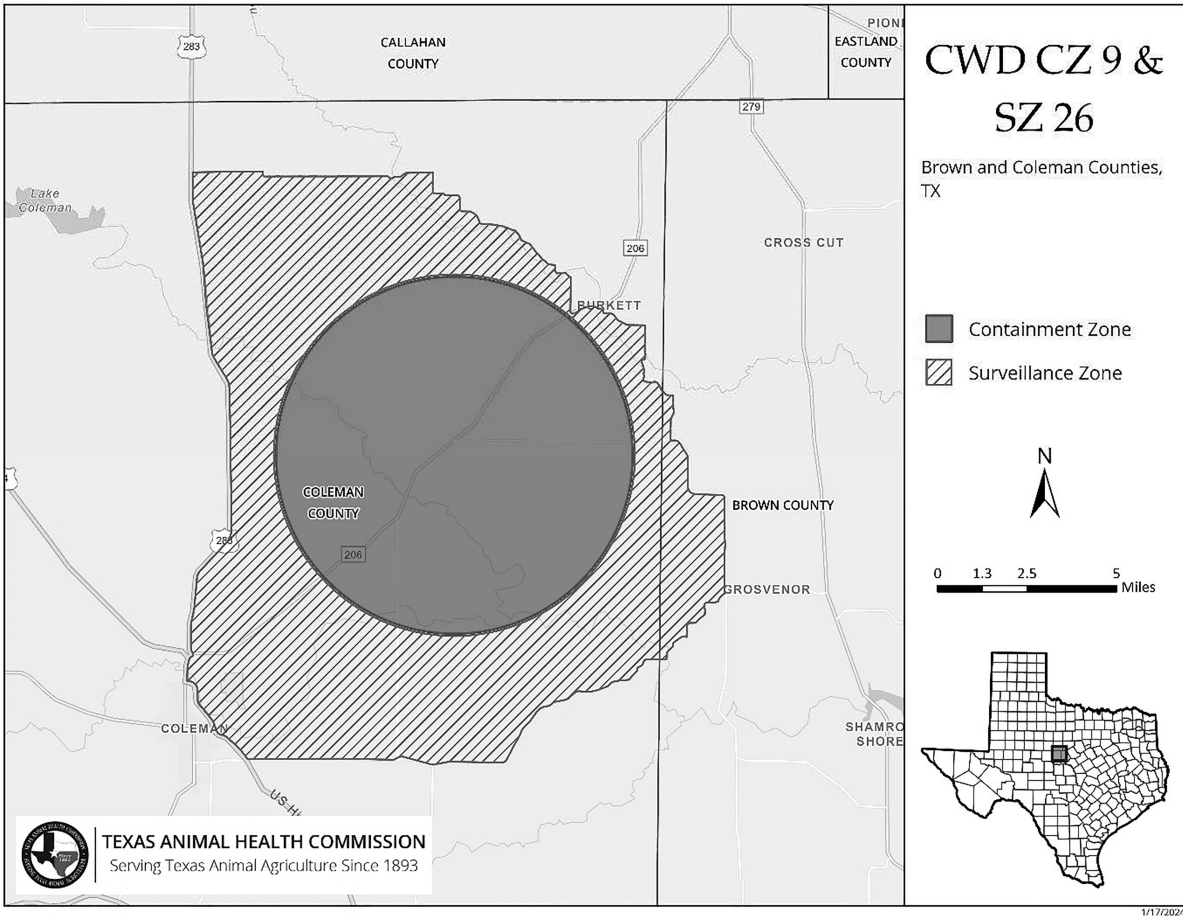


Figure: 4 TAC §40.6(b)(2)(V)

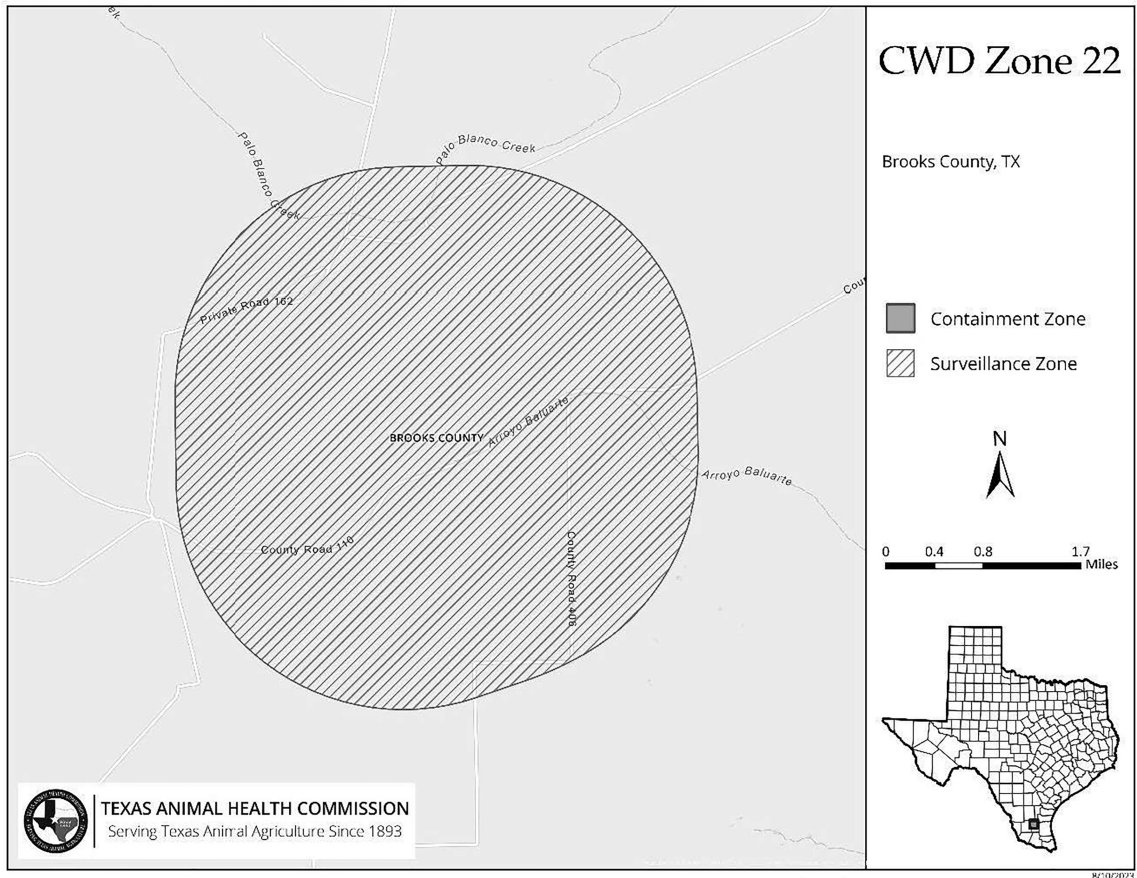


Figure: 4 TAC §40.6(b)(2)(W)

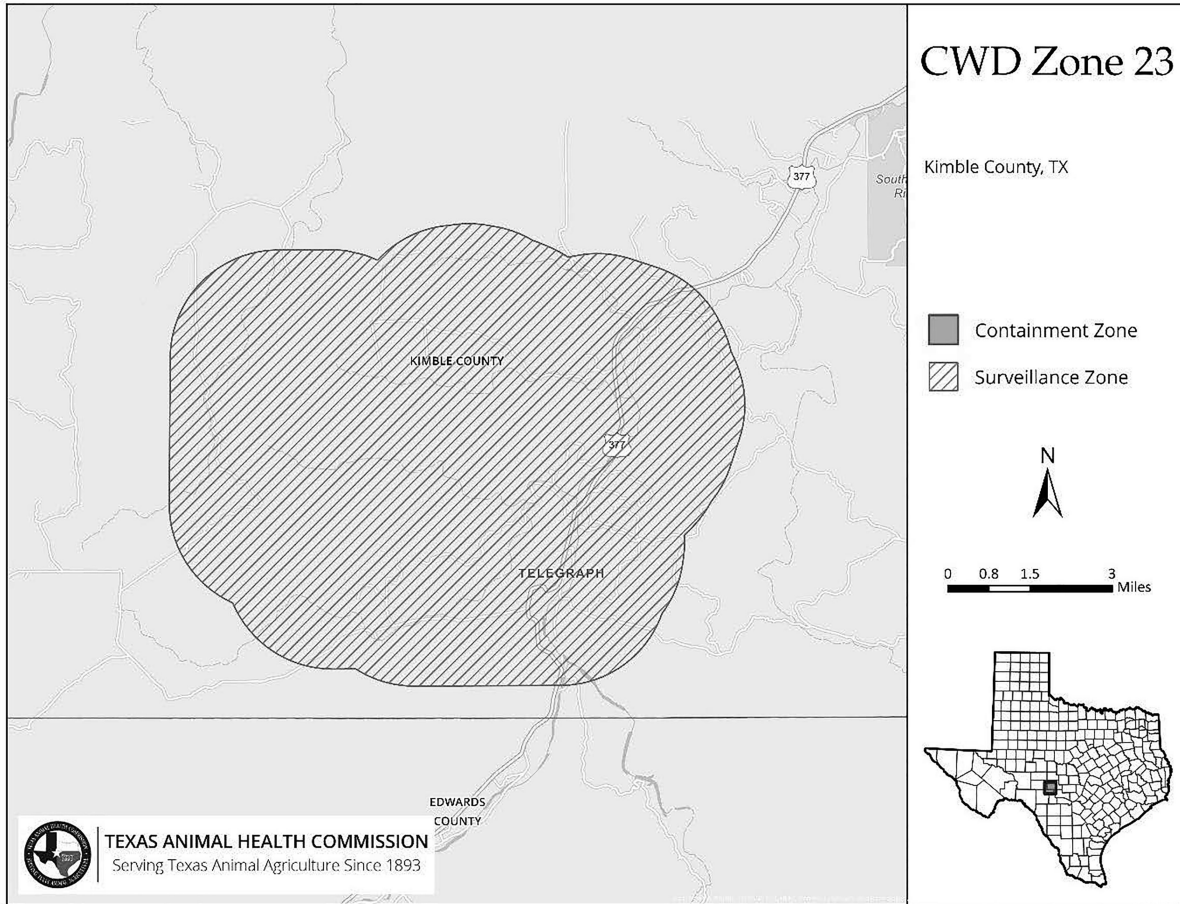


Figure: 4 TAC §40.6(b)(2)(X)

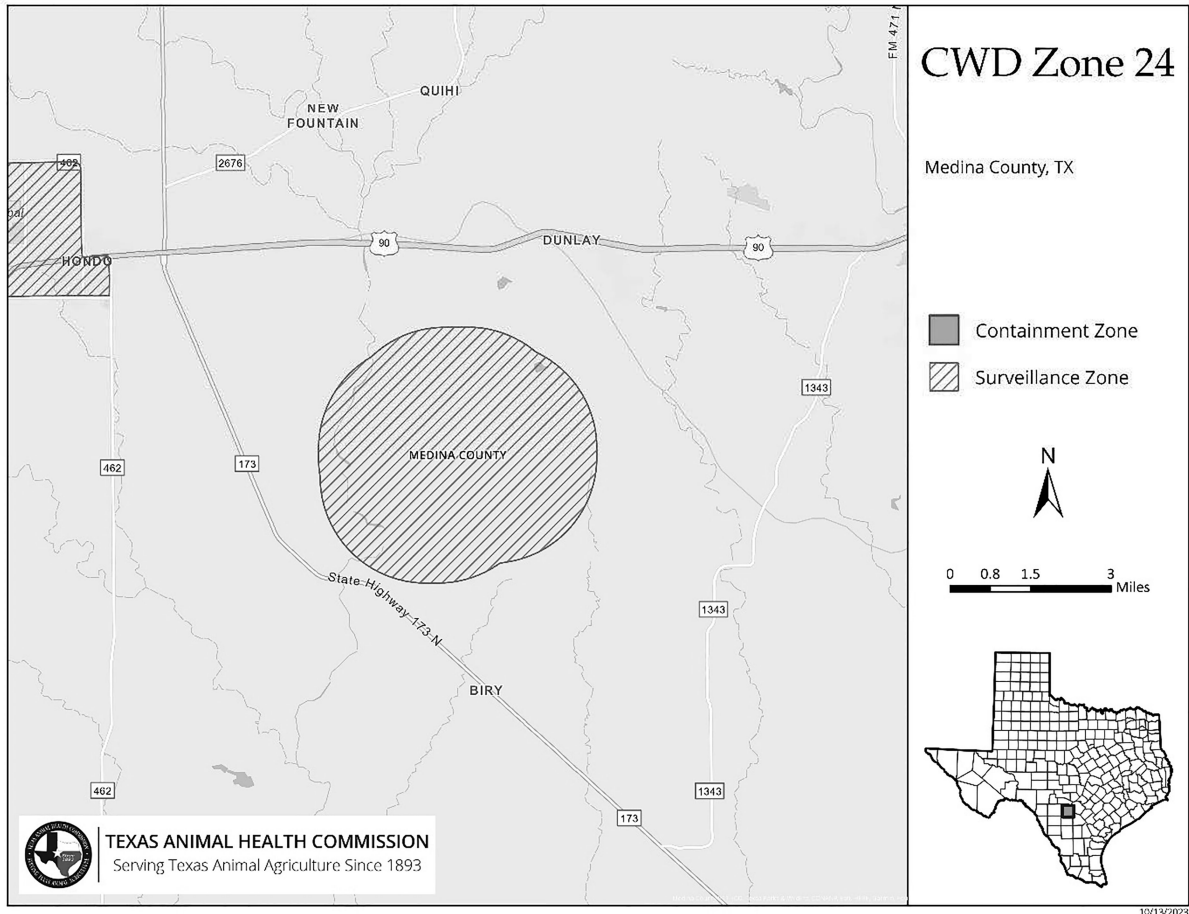


Figure: 4 TAC §40.6(b)(2)(Y)

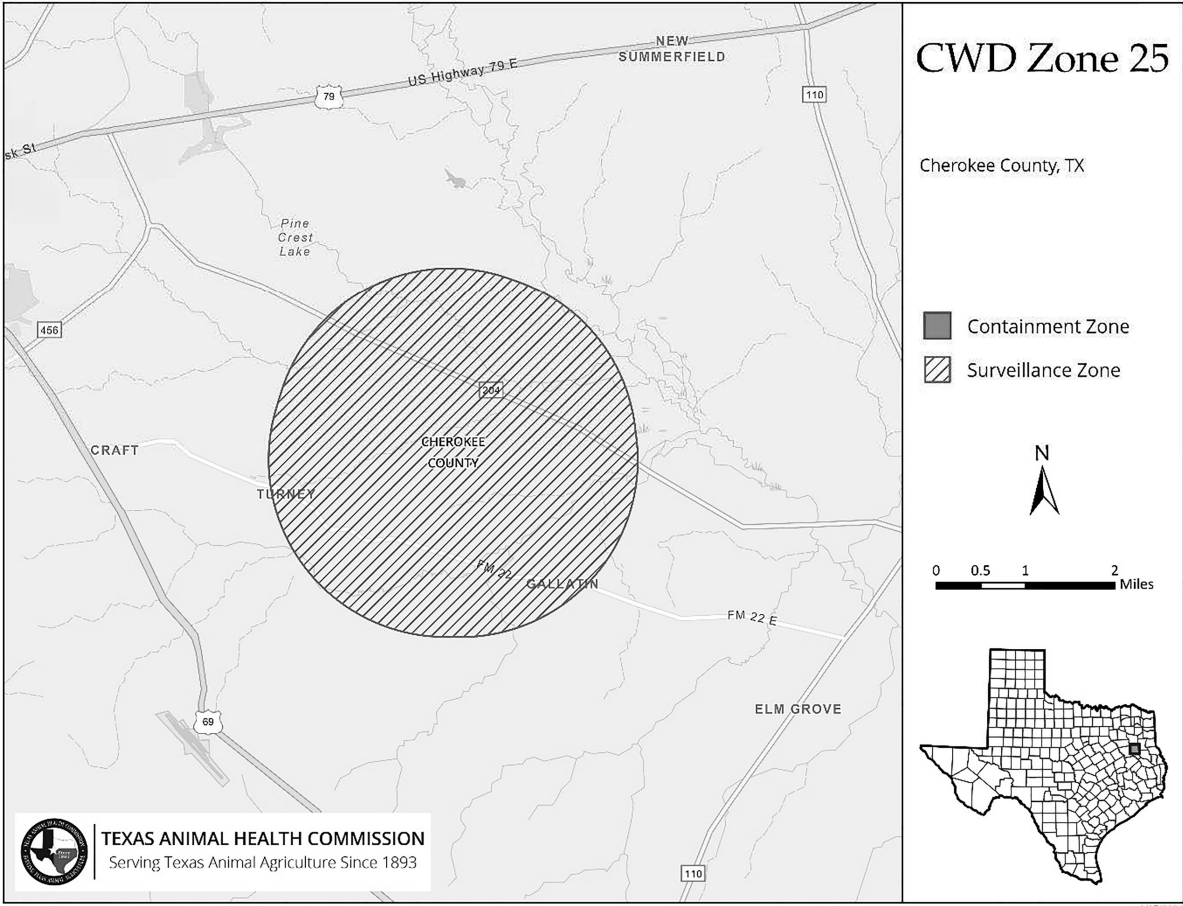


Figure: 4 TAC §40.6(b)(2)(Z)

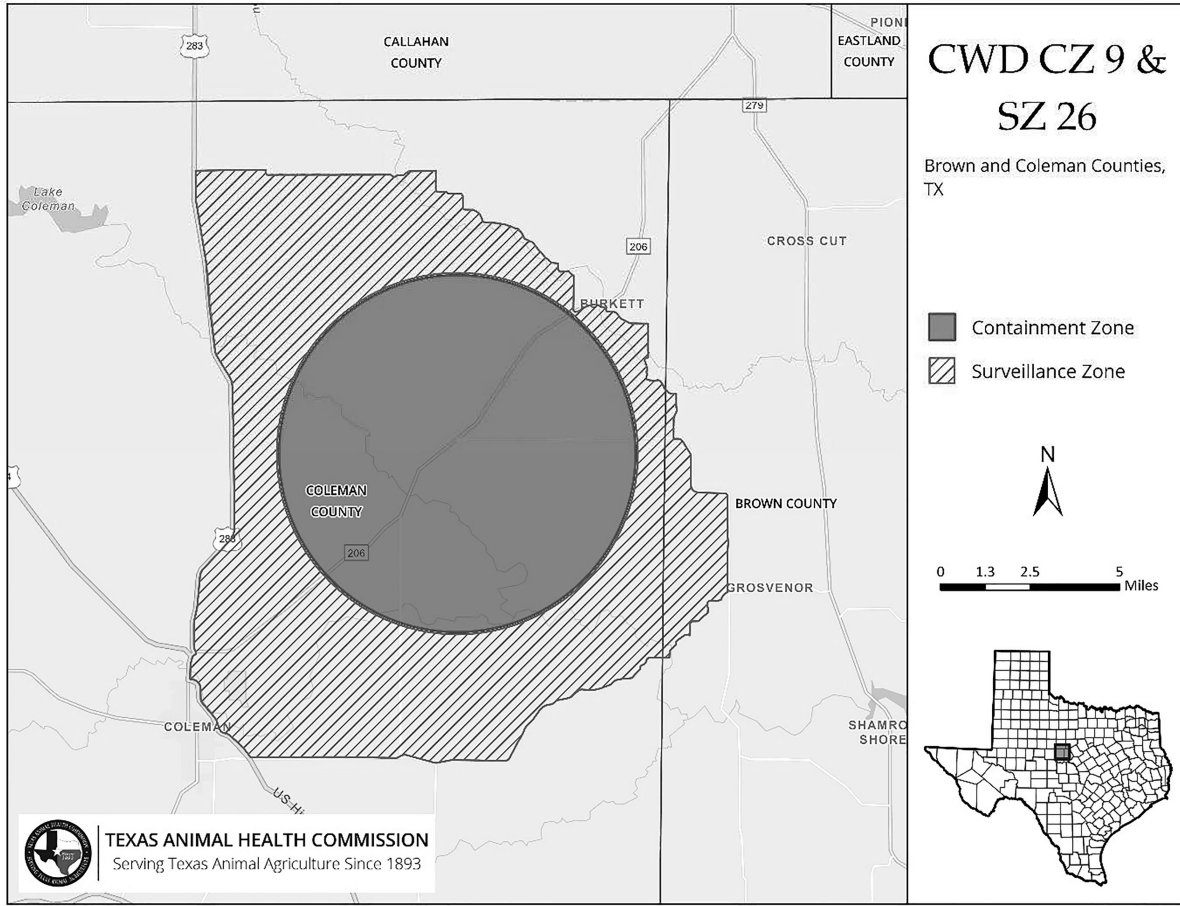


Figure: 26 TAC §559.107(d)

<b>S E V E R E I T Y</b>		Isolated	Pattern	Widespread
	Immediate threat	\$350 - \$500 J	\$350 - \$500 K	\$350 - \$500 L
	Actual harm	\$200 - \$350 G	\$200 - \$350 H	\$200 - \$350 I
	No actual harm with a potential for more than minimal harm	\$100 - \$200 D	\$100 - \$200 E	\$100 - \$200 F
	No actual harm with a potential for minimal harm	\$0 A	\$0 B	\$0 C

S C O P E

Note: To assist in using the administrative penalty schedule, the following example is provided: a facility cited for a violation that is an immediate threat to the health or safety of elderly persons or persons with disabilities and is widespread in scope will have an administrative penalty assessed in the amount of \$350-\$500, as shown in box "L."