



Texas Secretary of State  
ELECTIONS DIVISION



# Using Secretary of State Resources

36th Annual Election Law Seminar  
for Cities, Schools, and Other Political Subdivisions



## Overview

- VoteTexas.gov
  - Voter Registration
  - Voting In Person
  - Voting By Mail
  - Am I Registered
  - Voter ID
  - Get Involved
  - Frequently Asked Questions
- Main Webpage
  - Voter Registration Resources
  - Conducting Elections
  - Candidate Information
  - Election Officials
  - Training and Education Resources
  - Forms, Resources, Legal Library



# Texas Secretary of State

ELECTIONS DIVISION



[VoteTexas.gov](https://VoteTexas.gov)



# Texas Secretary of State

ELECTIONS DIVISION



[Mobile Version](#) | [Contact](#) | [En Español](#)

[Requirements for voting in person](#) | [ID requirements for voting by mail](#) | [Am I Registered to Vote?](#) | [What's on the Ballot?](#) | [Find My Polling Place](#)



- VOTER REGISTRATION
- VOTING IN PERSON
- VOTING BY MAIL
- VOTERS WITH DISABILITIES
- GET INVOLVED
- FAQS
- RESOURCES

What do you want to know about voting?

Thank you for visiting VoteTexas.gov, the one-stop resource for voter information.

Secretary of State  
Jane Nelson

### LATEST TWEETS

#### Posts from @VoteTexas

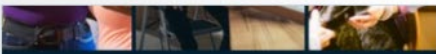
VoteTexas reposted



**Texas Secretary of State**  
@TXsecofstate · Nov 30

With over 3 million small businesses, Texas continues to set the standard for entrepreneurship. This Small Business Saturday, take a moment to shop local and invest in the heart of our economy.

[#SmallBusinessSaturday](#)



Shop Small Business

### The General Election Takes Place on

NOV:5:2024

- 7 OCT** Last Day to Register
- 25 OCT** Mail Ballot App. Deadline
- 21 OCT** Early Voting Begins
- 1 NOV** Early Voting Ends

[AM I REGISTERED?](#)

[REGISTER TO VOTE](#)

[WHAT'S ON THE BALLOT?](#)

[VOTER ID](#)

[WHERE'S MY POLLING PLACE?](#)

[ELECTION RESULTS](#)

[ELECTION STATISTICS & TURNOUT DATA](#)

[APPLICATION FOR BALLOT BY MAIL](#)



**VOTETEXAS.GOV**  
POWERED BY THE TEXAS SECRETARY OF STATE



VOTER REGISTRATION

VOTING IN PERSON

VOTING BY MAIL

VOTERS WITH DISABILITIES

GET INVOLVED

FAQS

RESOURCES

### Voter Registration

[Voter Registration](#)

[Eligibility for Registration](#)

[How to Register/Update your Information](#)

[VR Certificate](#)

### Voter Registration

Registering to vote in Texas is easy! So long as you are eligible, you will be able to register to vote in your county of residence to make your voice heard in local, state and federal elections.

**[Start a new voter registration application here.](#)**

Texas law requires eligible voters to register by the 30th day before Election Day. **The voter registration deadline for the November 5, 2024 Election is October 7, 2024.**

To confirm your voter registration status, you can visit the Texas Secretary of State's [Am I Registered?](#) portal, which allows you to look up your voter registration record in the statewide voter registration database.

Voter registration in Texas is county-based, so we encourage you to [contact your county voter registrar](#) for specific questions regarding the status of your voter registration.

Texans who have recently changed their name or moved can easily update their voter registration online through Texas.gov. [Click here to update your voter registration information online.](#)



**Not Registered?**

To vote in Texas, you must be registered.



**Contact us**

We're looking forward



**Voting is easy, so is getting the**





[Am I Registered to Vote?](#)

[What's on the Ballot?](#)

[Find My Polling Place](#)

[Election Results](#)

[Voting Issues for Texas Evacuees Due to N](#)



VOTER REGISTRATION

VOTING IN PERSON

VOTING BY MAIL

VOTERS WITH DISABILITIES

GET INVOLVED

FAQS

RESOURCES

## Voting in Person

[Voting in Texas](#)

[Where's my Polling Place?](#)

[Voter ID](#)

[Voting Systems](#)

[Early Voting](#)

[Curbside Voting](#)

[Assistance at the Polls](#)

[What's Allowed at the Polling Place?](#)

[Emergency Ballots Due to Death in the Family](#)

[Presidential Ballots](#)

## Voting in Person

Texas has uniform Election Days in November and May of each year, offering voters the chance to make their voices heard in local, state, and federal elections, including local and statewide ballot propositions that impact the everyday lives of Texas communities.

Voting in Texas is county-based, meaning that on any given Election Day, there are really 254 separate elections occurring at the same time. This decentralized system allows choices for county governments – which oversee elections – while simultaneously ensuring that every county operates under the same election laws as set forth in the Texas Election Code.

In this section, you will learn how to find your polling place in your county of registration, what to bring to the polls to identify yourself, what type of voting systems you will be using, and what to expect when you go to cast your vote.

Additionally, this section provides helpful information for voters with disabilities who may need additional assistance at the polls.



### Not Registered?

To vote in Texas, you must be registered. Simply pick up a [voter registration](#)



### Contact us

We're looking forward to hearing from you.



### Voting is easy, so is getting the facts

[Voter I.D. FAQs](#)



- VOTER REGISTRATION
- VOTING IN PERSON
- VOTING BY MAIL**
- VOTERS WITH DISABILITIES
- GET INVOLVED
- FAQS
- RESOURCES

Search [input] Go

## Voting by Mail

### Voting by Mail

Eligibility Requirements (ABBM/FPCA)

Application for a Ballot by Mail (ABBM)

Completing and Mailing your Carrier Envelope

Track your Ballot by Mail

Find your Early Voting Clerk

Military & Overseas Voters

Emergency Ballots due to Sickness or Physical Disability

Presidential Ballots

## Voting by Mail

To vote by mail, you must provide ONE of the following numbers on your ballot by mail application (ABBM) and your mail ballot carrier envelope:

- Texas Driver's License, Texas Personal Identification Number or Election Identification Certificate Number issued by the Texas Department of Public Safety (NOT your voter registration VUID number); OR the last 4 digits of your Social Security Number.



Texas Driver License\*



Texas Personal ID Card\*



Texas Election ID Certificate\*\*



Social Security Card

If you have not been issued a Texas Driver's License, Texas Personal Identification Number, Texas Election Identification Certificate Number or a Social Security Number, you must indicate so by checking the appropriate box on the ABBM or carrier envelope.

\*For voters aged 18-69 years, photo ID can be expired for up to four years. For voters aged 70 and older, photo ID can be expired for any length of time if otherwise valid.

\*\*The Texas Election ID Certificate is a free photo ID issued by DPS for voting purposes. The number on this ID is NOT your Voter Unique Identifier (VUID) on the voter registration card you receive in the mail. Your VUID is NOT required information on either your ABBM or mail ballot carrier envelope.

Voting by mail in Texas has been available to elderly voters and voters with physical disabilities for decades. Remember, however, that many of the legal safeguards designed to protect voters and their ballots are impossible to enforce in the privacy of the voter's home. Here are a few tips that may prove helpful:

- Call your local or county office holding the election and request that an application to vote by mail be sent to you, or [download the application here \(PDF\)](#).



- VOTER REGISTRATION
- VOTING IN PERSON
- VOTING BY MAIL
- VOTERS WITH DISABILITIES
- GET INVOLVED**
- FAQS
- RESOURCES

### Get Involved

#### Get Involved

[How to be an Election Worker](#)

[Student Clerks](#)

[Volunteer Deputy Registrars](#)

[Poll Watchers](#)

### Get Involved

Do you want to help eligible Texas voters get registered and vote? Do you have a passion for helping fellow voters in your community? Do you want to help educate voters about the election process?

There are plenty of ways to get involved in Texas! Whether you want to help out with registration or the voting process itself, this page includes helpful tips on how you can engage with our democracy:

- [Become an Election Worker](#)
- [Become a Student Voting Clerk](#)
- [Become a Volunteer Deputy Registrar](#)
- [Become a Poll Watcher](#)



#### Not Registered?

To vote in Texas, you must be registered. Simply pick up a [voter registration](#)



#### Contact us

We're looking forward to hearing from you.



#### Voting is easy, so is getting the facts

[Voter I.D. FAQs](#)





[Voting Issues for Texas Evacuees Due to Natural Disasters](#)

[ID requirements for voting in person](#)

[ID requirements for voting by mail](#)

[Am I Regi](#)



- VOTER REGISTRATION
- VOTING IN PERSON
- VOTING BY MAIL
- VOTERS WITH DISABILITIES
- GET INVOLVED
- FAQS**
- RESOURCES

## FAQ

- [Voting Issues for Texas Evacuees Due to Natural Disasters](#)
- [Registration](#)
- [Voting Systems](#)
- [Early Voting](#)
- [Where to Vote](#)
- [Party Affiliation](#)
- [Student Election Clerk FAQ](#)
- [Your Rights](#)

## FAQ

The below Frequently Asked Questions (FAQs) have been compiled with the **November 5, 2024 - Uniform Election** in mind. We hope that you will take a moment to review these pages, as you may find the answers to your questions. We encourage you to explore our website for more detailed information on elections and voting in Texas. We hope you find this useful, and we appreciate this opportunity to serve you. **Note: We have grouped questions and answers in categories and provided links to additional information when needed.**

- **Q. I'm not sure if I'm registered; how can I confirm my voter registration status?**
  - A. You can confirm your registration status on this website by going to [Am I Registered?](#) where you will select one of three methods for conducting your search. You can base your search on: 1. your Voter Unique Identifier (VUID), which appears on your voter registration certificate; 2. your Texas driver's license number, if you provided it when you applied for voter registration; or 3. your first and last name. Or, you can call the [voter registrar's office](#) in the county where you reside.
- + **Q. I'm not registered, but want to vote in the November 5, 2024 - Uniform Election; how can I be sure that I'm registered in time to vote?**
- + **Q. If I send my registration by the deadline, what happens next?**
- + **Q. I am registered to vote, but I moved this past year. Is there anything I need to do to make sure that I won't have a problem voting in November?**
- + **Q. I don't remember seeing my certificate lately. Is that a problem? Don't I just stay**



[for Texas Evacuees Due to Natural Disasters](#)

[ID requirements for voting in person](#)

[ID requirements for voting by mail](#)

[Am I Registered to Vote](#)



VOTER  
REGISTRATION

VOTING IN  
PERSON

VOTING BY  
MAIL

VOTERS WITH  
DISABILITIES

GET  
INVOLVED

FAQS

RESOURCES





### FAQ

[Voting Issues for Texas Evacuees Due to Natural Disasters](#)

[Registration](#)

[Voting Systems](#)

**[Early Voting](#)**

[Where to Vote](#)

[Party Affiliation](#)

[Student Election Clerk FAQ](#)

[Your Rights](#)

### Early Voting

+ **Q. What will I need in order to vote in person on election day or during early voting?**

+ **Q. Who is eligible to vote early? What are the dates for voting early in person?**

- **Q. Where do I go to vote?**

A. You will be able to find early voting locations by using our search site [Am I Registered?](#), which will be populated with voting sites a few days before early voting begins. Or, you may want to contact the [Early Voting Clerk for State and County Elections](#) in your county. Also, many newspapers publish early voting and election day polling locations, so you might be able to find the information there.

+ **Q. Can anybody vote early by mail?**

+ **Q. I fall under one of the 5 reasons above. What do I do now? Are there deadlines connected with this procedure?**

+ **Q. Can anyone vote early, or only those people who are going to be out of town on Election Day? What are the dates for voting early in person?**

[\[Expand all\]](#)



**VOTETEXAS.GOV**  
POWERED BY THE TEXAS SECRETARY OF STATE



- VOTER REGISTRATION
- VOTING IN PERSON
- VOTING BY MAIL
- VOTERS WITH DISABILITIES
- GET INVOLVED
- FAQS
- RESOURCES

### FAQ

[Voting Issues for Texas Evacuees Due to Natural Disasters](#)

[Registration](#)

[Voting Systems](#)

[Early Voting](#)

[Where to Vote](#)

[Party Affiliation](#)

[Student Election Clerk FAQ](#)

[Your Rights](#)

### Where to Vote

**Q. Where do I go to vote?**

**A.** You will be able to find early voting locations by using our search site [Am I Registered?](#), which will be populated with voting sites a few days before early voting begins. Or, you may want to contact the [Early Voting Clerk for State and County Elections](#) in your county. Also, many newspapers publish early voting and election day polling locations, so you might be able to find the information there.

**+ Q. It's election day, November 5, 2024, and I'm registered and ready to vote and have what I need to bring to the polls. Where do I go? What are the hours for voting on election day?**

[\[Expand all\]](#)



- VOTER REGISTRATION
- VOTING IN PERSON
- VOTING BY MAIL
- VOTERS WITH DISABILITIES
- GET INVOLVED
- FAQS
- RESOURCES

## FAQ

[Voting Issues for Texas Evacuees Due to Natural Disasters](#)

[Registration](#)

[Voting Systems](#)

[Early Voting](#)

[Where to Vote](#)

[Party Affiliation](#)

[Student Election Clerk FAQ](#)

[Your Rights](#)

## Student Election Clerk FAQ

**Q. What are student election clerks?**

**A.** Student election clerks are high school students who are 16 years of age or older who participate in the electoral process by serving as election clerks at the polling place during Early Voting and/or on Election Day. The purpose is two-fold: 1) to introduce students to the electoral process, including the rights and responsibilities of voters, and to inspire the students with an interest in their government, and 2) to provide their local election officials with additional resources, by filling positions at polling places working under the direction of the polling place presiding judge election judge.

**+ Q. What are the requirements for a student to serve as an election clerk?**

**+ Q. What are the Benefits of Serving as an Election Clerk?**

**+ Q. What are the Responsibilities of an Election Clerk?**

**+ Q. How do I Apply to be a Student Election Clerk?**

**+ Q. How Often can I Serve as a Student Election Clerk?**

**+ Q. Can I still work as a student election clerk once I turn 18?**

**+ Q. How will the polling place election judge know which students are interested and available or even how to contact them?**



[Mobile Version](#) | [Contact](#) | [En Español](#)

[How to register for voting by mail](#) | [Am I Registered to Vote?](#) | [What's on the Ballot?](#) | [Find My Polling Place](#) | [Election Results](#) | [Voting Issues f](#)

**VOTETEXAS.GOV**

POWERED BY THE *TEXAS SECRETARY OF STATE*



VOTER  
REGISTRATION

VOTING IN  
PERSON

VOTING BY  
MAIL

VOTERS WITH  
DISABILITIES

GET  
INVOLVED

FAQS

RESOURCES



Go

## Resources

### Military & Overseas Voters

[Voter ID Education Materials](#)

[Informational Pamphlets](#)

[Promoting VoteTexas.gov](#)

[Other Links of Interest](#)

## Military & Overseas Voters

- [Military & Overseas Voter](#)

### Federal Voting Assistance Program with the U.S. Department of Defense

[www.fvap.gov](http://www.fvap.gov)



### Not Registered?

To vote in Texas, you must be registered. Simply pick up a [voter registration](#)



### Contact us

We're looking forward to hearing from you.



### Voting is easy, so is getting the facts

[FAQs](#)





VOTER  
REGISTRATION

VOTING IN  
PERSON

VOTING BY  
MAIL

VOTERS WITH  
DISABILITIES

GET  
INVOLVED

FAQS

RESOURCES

### Voting by Mail

Voting by Mail

Eligibility Requirements  
(ABBM/FPCA)

Application for a Ballot by  
Mail (ABBM)

Completing and Mailing your  
Carrier Envelope

Track your Ballot by Mail

Find your Early Voting Clerk

### Military & Overseas Voters

Emergency Ballots due to  
Sickness or Physical  
Disability

Presidential Ballots

### Military & Overseas Voters

First and foremost, we would like to thank you, the military voters, for your service to our country. To all U.S. citizens overseas, thank you for your interest in your country's elections while far away. (Federal voting law defines "overseas" as anywhere outside the United States. This includes Canada and Mexico.) Military and overseas voters are welcome to use the regular registration and early voting by mail process (also known as absentee voting) available to all voters away from their home county on Election Day. However, there are also special provisions for you.

#### The process is as easy as ABC:

##### A (Application)

Fill out and file your FPCA (Federal Postcard Application) as soon as possible but no later than the 11th day before Election Day.

##### B (Ballot)

Receive your ballot or use the FWAB (Federal Write-in Absentee Ballot).

##### C (Casting and Counting)

Cast your vote by returning your marked ballot by Election Day, or the 5th day after if voting from overseas.

[TRACK THE PROGRESS OF YOUR FPCA AND BALLOT](#)

#### A. Application

##### Who can use the Federal Postcard Application (FPCA)?

- Active duty military, spouses, and dependents (voting from outside the home Texas county)
- U.S. Citizens (nonmilitary) temporarily overseas\* away from the home Texas county
- U.S. Citizens (nonmilitary) permanently overseas\* away from the (previous) home Texas



Mobile Version | Contact | En Español

in person ID requirements for voting by mail Am I Registered to Vote? What's on the Ballot? Find My Polling Place Electio



VOTER REGISTRATION

VOTING IN PERSON

VOTING BY MAIL

VOTERS WITH DISABILITIES

GET INVOLVED

FAQS

RESOURCES



Search

Go

## Resources

Military & Overseas Voters

Voter ID Education Materials

Informational Pamphlets

Promoting VoteTexas.gov

Other Links of Interest

## Voter ID Education Materials

### Materials on Voter ID

#### Information Cards

- [VoteReady Information Card \(PDF\)](#) - [Spanish \(PDF\)](#)

#### Posters and Fliers

- [8.5X11 Ballot by Mail Informational Flyer \(PDF\)](#) - [Spanish \(PDF\)](#)
- [11X17 Ballot by Mail Poster \(PDF\)](#) - [Spanish \(PDF\)](#)
- [8.5X11 Voter ID Informational Flyer \(PDF\)](#) - [Spanish \(PDF\)](#)
- [11X17 Voter ID Poster \(PDF\)](#) - [Spanish \(PDF\)](#)
- [24X36 Voter ID Poster \(PDF\)](#) - [Spanish \(PDF\)](#)



To use this button image, copy and paste the code below into your site:

```
<a href="https://www.votetexas.gov/"></a>
```



To use this button image, copy and paste the code below into your site:



[Mobile Version](#) | [Contact](#) | [En Español](#)

[Requirements for voting in person](#)   [ID requirements for voting by mail](#)   [Am I Registered to Vote?](#)   [What's on the Ballot?](#)   [Find My Polling Pl](#)

**VOTETEXAS.GOV**  
POWERED BY THE TEXAS SECRETARY OF STATE



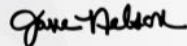
- VOTER REGISTRATION
- VOTING IN PERSON
- VOTING BY MAIL
- VOTERS WITH DISABILITIES
- GET INVOLVED
- FAQS
- RESOURCES



Search

What do you want to know about voting?

Thank you for visiting VoteTexas.gov, the one-stop resource for voter information.



Secretary of State  
Jane Nelson



SELECT A QUESTION...

LATEST TWEETS

Posts from @VoteTexas

VoteTexas reposted



Texas Secretary of State  
@TXsecofstate · Nov 30

With over 3 million small businesses, Texas continues to set the standard for entrepreneurship. This Small Business Saturday, take a moment to shop local and invest in the heart of our economy.  
[#SmallBusinessSaturday](#)



Shop Small Business

The General Election Takes Place on

NOV:5:2024

- 7 OCT** Last Day to Register
- 25 OCT** Mail Ballot App. Deadline
- 21 OCT** Early Voting Begins
- 1 NOV** Early Voting Ends

**AM I REGISTERED?**

REGISTER TO VOTE

WHAT'S ON THE BALLOT?

VOTER ID

WHERE'S MY POLLING PLACE?

ELECTION RESULTS

ELECTION STATISTICS & TURNOUT DATA

APPLICATION FOR BALLOT BY MAIL



**Use the Am I Registered? section to check your:**

- Voter registration status
- Poll location
- Early voting locations
- Registration information
- Key Election Dates

**Not Registered to Vote?**

[Register](#)

**Need to Change Your Name or Address?**

Update your information [online](#) now.

**Need to Track a Ballot by Mail?**

Access the Ballot Tracker [here](#).

**Am I Registered?**

Selection Criteria

**Note:** 'Am I Registered?' provides a web-based search of data extracted from Texas's statewide voter registration database. It is NOT the official record of your registration, which is retained by the voter registration office in the county of your residence.





[Mobile Version](#) | [Contact](#) | [En Español](#)

[Requirements for voting in person](#)   [ID requirements for voting by mail](#)   [Am I Registered to Vote?](#)   [What's on the Ballot?](#)   [Find My Polling Place](#)

**VOTETEXAS.GOV**  
POWERED BY THE TEXAS SECRETARY OF STATE



- VOTER REGISTRATION
- VOTING IN PERSON
- VOTING BY MAIL
- VOTERS WITH DISABILITIES
- GET INVOLVED
- FAQS
- RESOURCES



Search

What do you want to know about voting?

Thank you for visiting VoteTexas.gov, the one-stop resource for voter information.

Secretary of State  
Jane Nelson



SELECT A QUESTION...

LATEST TWEETS

Posts from @VoteTexas

VoteTexas reposted



**Texas Secretary of State**  
@TXsecofstate · Nov 30

With over 3 million small businesses, Texas continues to set the standard for entrepreneurship. This Small Business Saturday, take a moment to shop local and invest in the heart of our economy.  
[#SmallBusinessSaturday](#)



Shop Small Business

The General Election Takes Place on

**NOV:5:2024**

- 7 OCT** Last Day to Register
- 25 OCT** Mail Ballot App. Deadline
- 21 OCT** Early Voting Begins
- 1 NOV** Early Voting Ends

AM I REGISTERED?

REGISTER TO VOTE

WHAT'S ON THE BALLOT?

VOTER ID

WHERE'S MY POLLING PLACE?

ELECTION RESULTS

ELECTION STATISTICS & TURNOUT DATA

APPLICATION FOR BALLOT BY MAIL





# Texas Secretary of State

## ELECTIONS DIVISION



Mobile Version | Contact | En Español

Find My Polling Place | Election Results | Voting Issues for Texas Evacuees Due to Natural Disasters | ID requirements for voting in person



- VOTER REGISTRATION
- VOTING IN PERSON
- VOTING BY MAIL
- VOTERS WITH DISABILITIES
- GET INVOLVED
- FAQS
- RESOURCES

### Voting in Person

Voting in Texas

Where's my Polling Place?

Voter ID

Voting Systems

Early Voting

Curbside Voting

Assistance at the Polls

What's Allowed at the Polling Place?

Emergency Ballots Due to Death in the Family

Presidential Ballots

### Voter ID

#### Identification Requirements for Voting

Under Texas law, voters who possess one of the seven acceptable forms of photo ID must present that ID at the polls when voting in person. Voters who do not possess and cannot reasonably obtain one of the seven approved forms of photo ID may fill out a [Reasonable Impediment Declaration \(RID\)](#) (PDF) at the polls and present an alternative form of ID, such as a utility bill, bank statement, government check, or a voter registration certificate.



BRING 1 OF THE 7 APPROVED FORMS OF ID WITH YOU TO THE POLLS.



DO NOT POSSESS AND CANNOT REASONABLY OBTAIN ONE OF THESE PHOTO IDS?

You can still vote. Simply fill out a Reasonable Impediment Declaration by showing a copy or original of one of the following approved IDs:

- Certified Domestic Birth Certificate or Court Admissible Birth Document
- Current Utility Bill
- Bank Statement
- Government Check
- Paycheck
- Government document with your name and an address including your Voter Registration Certificate

Learn about the requirements and how to identify yourself on your ballot by mail materials.

POWERED BY THE TEXAS SECRETARY OF STATE or call 1-800-252-VOTE

\*For voters aged 18 - 69 years, photo ID can be expired for up to four years. For voters aged 70 and older, photo ID can be expired for any length of time if otherwise valid.

#### Here is a list of the acceptable forms of photo ID:

- Texas Driver License issued by the Texas Department of Public Safety (DPS)
- Texas Election Identification Certificate issued by DPS
- Texas Personal Identification Card issued by DPS
- Texas Handgun License issued by DPS
- United States Military Identification Card containing the person's photograph
- United States Citizenship Certificate containing the person's photograph
- United States Passport (book or card)

With the exception of the U.S. Citizenship Certificate, which does not expire, for voters aged 18-69, the acceptable form of photo identification may be expired no more than four years before being presented for voter qualification at the polling place. For voters aged 70 or older, the acceptable form of photo identification may be expired for any length of time if the identification is otherwise valid.

[Election Identification Certificates](#) are available from [DPS driver license offices](#) during regular business hours. [Find mobile station locations here.](#)

#### Here is a list of the supporting forms of ID that can be presented if the voter does not possess one of the forms of acceptable photo ID and cannot reasonably obtain one:

- copy or original of a government document that shows the voter's name and an address, including the voter's voter registration certificate;
- copy of or original current utility bill;
- copy of or original bank statement;
- copy of or original government check;
- copy of or original paycheck; or
- copy of or original of (a) a certified domestic (from a U.S. state or territory) birth certificate or (b) a document confirming birth admissible in a court of law which establishes the voter's identity (which may include a foreign birth document).

After presenting one of the forms of supporting ID listed above, the voter must execute a Reasonable Impediment Declaration.

#### Procedures for Voting

When a voter arrives at a polling location, the voter will be asked to present one of the seven (7) acceptable forms of photo ID that is current or, for voters aged 18-69, expired no more than four years. Voters aged 70 or older may present one of the seven (7) acceptable forms of photo ID that is expired for any length of time that is otherwise valid. If a voter does not possess one of the seven (7) acceptable forms of photo ID and cannot reasonably obtain one, the voter may present a supporting form of ID and execute a Reasonable Impediment Declaration, noting the voter's reasonable impediment to obtaining an acceptable form of photo identification, stating that the information contained in the declaration is true, that the voter is the same individual personally appearing at the polling place to sign the declaration, and that the voter faces a reasonable impediment to procuring an acceptable form of photo identification.



# Texas Secretary of State

ELECTIONS DIVISION



[Mobile Version](#) | [Contact](#) | [En Español](#)

[Requirements for voting in person](#) | [ID requirements for voting by mail](#) | [Am I Registered to Vote?](#) | [What's on the Ballot?](#) | [Find My Polling Place](#)



- VOTER REGISTRATION
- VOTING IN PERSON
- VOTING BY MAIL
- VOTERS WITH DISABILITIES
- GET INVOLVED
- FAQS
- RESOURCES

What do you want to know about voting?

Thank you for visiting VoteTexas.gov, the one-stop resource for voter information.

Secretary of State  
Jane Nelson

### LATEST TWEETS

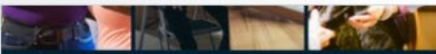
#### Posts from @VoteTexas

VoteTexas reposted



Texas Secretary of State  
@TXsecofstate · Nov 30

With over 3 million small businesses, Texas continues to set the standard for entrepreneurship. This Small Business Saturday, take a moment to shop local and invest in the heart of our economy.  
[#SmallBusinessSaturday](#)



Shop Small Business

### The General Election Takes Place on

NOV:5:2024

7 OCT

Last Day to Register

25 OCT

Mail Ballot App. Deadline

21 OCT

Early Voting Begins

1 NOV

Early Voting Ends

AM I REGISTERED?

REGISTER TO VOTE

WHAT'S ON THE BALLOT?

VOTER ID

WHERE'S MY POLLING PLACE?

ELECTION RESULTS

ELECTION STATISTICS & TURNOUT DATA

APPLICATION FOR BALLOT BY MAIL



## Application for a Ballot by Mail

### To be eligible to vote early by mail in Texas, you must:

- be 65 years or older;
- be sick or disabled;
- be out of the county on election day and during the period for early voting by personal appearance; or
- be expected to give birth within three weeks before or after Election Day; or
- be confined in jail, but otherwise eligible.

### Instructions for submitting an Application for Ballot by Mail (“ABBM”):

1. [Print \(PDF\)](#) the ABBM form
2. OR submit an [order online](#) and an ABBM will be mailed to you.
3. Complete Sections 1 through 4.
4. Sign and Date Section 5.
5. If you were unable to sign the application and someone witnessed your signature, that person must complete Section 6.
6. If someone helped you complete the application or mailed the application for you, that person must complete Section 6.
7. Affix postage.
  - a. If you printed the application you must place it in your own envelope and add postage.
  - b. If you ordered the application online and it was mailed to you - fold the application in half, moisten top tab, seal and add postage.

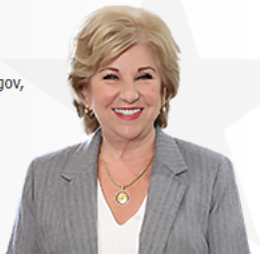


What do you want to know about voting?

Thank you for visiting VoteTexas.gov, the one-stop resource for voter information.

*Jane Nelson*

Secretary of State  
Jane Nelson



SELECT A QUESTION...

GO!

LATEST TWEETS

Posts from @VoteTexas

VoteTexas reposted

**Texas Secretary of State** @TXsecofstate · Nov 30

With over 3 million small businesses, Texas continues to set the standard for entrepreneurship. This Small Business Saturday, take a moment to shop local and invest in the heart of our economy. [#SmallBusinessSaturday](#)

**Shop Small Business**

The General Election Takes Place on

**NOV: 5: 2024**

<b>7</b> OCT	Last Day to Register	<b>25</b> OCT	Mail Ballot App. Deadline	<b>21</b> OCT	Early Voting Begins	<b>1</b> NOV	Early Voting Ends
-----------------	----------------------	------------------	---------------------------	------------------	---------------------	-----------------	-------------------

AM I REGISTERED?

REGISTER TO VOTE

WHAT'S ON THE BALLOT?

VOTER ID

WHERE'S MY POLLING PLACE?

ELECTION RESULTS

ELECTION STATISTICS & TURNOUT DATA

APPLICATION FOR BALLOT BY MAIL

**TRACK MY BALLOT**


BECOME A POLL WORKER OR WATCHER

FILE AN ELECTION COMPLAINT






<https://teamrv-mvp.sos.texas.gov/BallotTrackerApp/#/login>

TEXAS SECRETARY OF STATE  BALLOT BY MAIL TRACKER  
TEXAS ELECTION ADMINISTRATION SYSTEM

[← Back to My Voter Portal](#) [English](#) [En Español](#)

### Ballot by Mail Tracker

To track the status of your ballot by mail application or ballot, please enter your voter information below. Fields marked with an \* are statutorily required.

 Voter Information

<input type="text" value="First Name*"/>	<input type="text" value="Last Name*"/>
<input <img="" alt="calendar icon" data-bbox="1210 978 1235 1006" type="text" value="Date of Birth (mm/dd/yyyy)*"/>	<input <img="" alt="eye icon" data-bbox="1796 978 1821 1006" type="text" value="Last 4 digits of SSN*"/>
<input <img="" alt="eye icon" data-bbox="1210 1063 1235 1092" type="text" value="Driver's License # / DPS PIN*"/>	

If you are having issues accessing this tracker, please visit [Am I Registered](#) to view the information as listed in your voter registration record or contact your [county voter registrar](#).

Copyright © 2021 Civix





# Texas Secretary of State

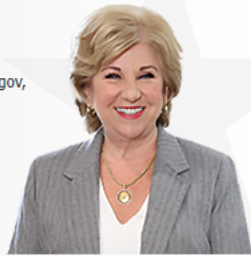
ELECTIONS DIVISION



What do you want to know about voting?

Thank you for visiting VoteTexas.gov, the one-stop resource for voter information.

Secretary of State  
Jane Nelson



SELECT A QUESTION...

GO!

### LATEST TWEETS

#### Posts from @VoteTexas

VoteTexas reposted



Texas Secretary of State  
@TXsecofstate · Nov 30



With over 3 million small businesses, Texas continues to set the standard for entrepreneurship. This Small Business Saturday, take a moment to shop local and invest in the heart of our economy.  
[#SmallBusinessSaturday](#)



Shop Small Business

### The General Election Takes Place on

NOV: 5: 2024

7  
OCT

Last  
Day to  
Register

25  
OCT

Mail  
Ballot  
App.  
Deadline

21  
OCT

Early  
Voting  
Begins

1  
NOV

Early  
Voting  
Ends

AM I REGISTERED?

REGISTER TO VOTE

WHAT'S ON THE BALLOT?

VOTER ID

WHERE'S MY POLLING PLACE?

ELECTION RESULTS

ELECTION STATISTICS & TURNOUT DATA

APPLICATION FOR BALLOT BY MAIL

TRACK MY BALLOT

BECOME A POLL WORKER OR WATCHER

FILE AN ELECTION COMPLAINT



## Texas Election Training Portal

Training and resources for Poll Workers and Watchers

[HOME](#)

[NEED HELP? ▾](#)

[Sign up for the course here!](#)

[LOGIN](#)

You are here: [Home](#)

### Welcome to the State of Texas' online election training portal



Protecting the integrity of our elections starts with the hard working local officials and citizens working hand-in-hand to conduct and observe the voting processes to ensure they are fair and are undertaken in accordance with the law.

Through this portal, you can complete the necessary training program to become a knowledgeable and efficient Election Judge or Clerk, as well as the necessary training to become a certified Poll Watcher on behalf of a candidate, political party, or specific-purpose political action committee.

The courses for both Poll Worker Training and Poll Watcher Training are divided into modules consisting of 2-6 lessons each. During the courses, you will be able to start, stop and return to the point where you left off, and skip from lesson to lesson until fully completed. At the end of each course, you must answer the exam questions to verify you understand the material.

Upon completing the courses, you will be able to print a certificate indicating that you have completed the Secretary of State's training. Poll watchers who complete the Poll Watcher Training must present their certificate of completion to the presiding judge at the polling place in order to be accepted as a poll watcher.

Thank you for helping ensure elections in Texas remain fair, credible, and something of which all Texans can be proud.

Sincerely,

Jane Nelson  
Secretary of State



[LOGIN](#) [LOGOUT](#) [COURSE CATALOG](#) [CONTACT US](#) [NEW USERS SIGN UP HERE](#)

## Texas Election Training Portal

Training and resources for Poll Workers and Watchers

[HOME](#) [NEED HELP? ▾](#) [Sign up for the course here!](#) [LOGIN](#)

You are here: [Home](#) > [COURSE CATALOG](#)

### COURSE CATALOG

#### Texas Poll Watcher Online Training

You must be logged in for the registration button to be displayed!

;

#### Online Poll Worker Training-Hart Equipment

You must be logged in for the registration button to be displayed!

;

#### Online Poll Worker Training-ES&S Equipment

You must be logged in for the registration button to be displayed!

;

#### Online Central Counting Station Training

You must be logged in for the registration button to be displayed!

;

#### Online Signature Verification Committee Training

You must be logged in for the registration button to be displayed!

;

#### Online Early Voting Ballot Board Training

You must be logged in for the registration button to be displayed!



# Texas Secretary of State

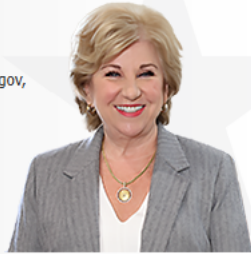
ELECTIONS DIVISION



What do you want to know about voting?

Thank you for visiting VoteTexas.gov, the one-stop resource for voter information.

Secretary of State  
Jane Nelson



SELECT A QUESTION...

GO!

### LATEST TWEETS

#### Posts from @VoteTexas

VoteTexas reposted



Texas Secretary of State  
@TXsecofstate · Nov 30



With over 3 million small businesses, Texas continues to set the standard for entrepreneurship. This Small Business Saturday, take a moment to shop local and invest in the heart of our economy.  
[#SmallBusinessSaturday](#)



Shop Small Business

### The General Election Takes Place on

NOV: 5: 2024

7  
OCT

Last  
Day to  
Register

25  
OCT

Mail  
Ballot  
App.  
Deadline

21  
OCT

Early  
Voting  
Begins

1  
NOV

Early  
Voting  
Ends

AM I REGISTERED?

REGISTER TO VOTE

WHAT'S ON THE BALLOT?

VOTER ID

WHERE'S MY POLLING PLACE?

ELECTION RESULTS

ELECTION STATISTICS & TURNOUT DATA

APPLICATION FOR BALLOT BY MAIL

TRACK MY BALLOT

BECOME A POLL WORKER OR WATCHER

FILE AN ELECTION COMPLAINT



# Texas Secretary of State

## ELECTIONS DIVISION



Texas Secretary of State P.O. Box 12060 Austin, Texas 78711-2060 1-800-252-VOTE (8683) www.sos.state.tx.us

ELECTION COMPLAINT TO THE TEXAS SECRETARY OF STATE		
Docket Number	<b>OFFICE USE ONLY</b>	Date Hand-delivered or Date Postmarked / /

Please read the Important Information at the end of this document. The Secretary of State has no authority to order a new election, change an election result, or conduct a criminal investigation. A complaint filed with this form will not alter the results of an election.

This complaint form **MUST BE SIGNED** before it is submitted to the Secretary of State; therefore, you must print it out and sign it before mailing or faxing a copy or emailing a scanned, signed copy.

### I. IDENTITY OF COMPLAINANT

1 COMPLAINANT NAME	MS / MRS / MR	FIRST	MI
	NICKNAME	LAST	SUFFIX
2 COMPLAINANT PHYSICAL ADDRESS	ADDRESS (TO INCLUDE APT / SUITE # IF APPLICABLE)		CITY STATE ZIP CODE
	(Full home or business address, including street, city, state, and zip code)		
3 COMPLAINANT MAILING ADDRESS	ADDRESS (TO INCLUDE APT / SUITE # IF APPLICABLE)		CITY STATE ZIP CODE
	<input type="checkbox"/> (check if same as above)		
(Full home or business address, including street, city, state, and zip code)			
4 COMPLAINANT TELEPHONE NUMBER	AREA CODE	PHONE NUMBER	EXT
5 COMPLAINANT E-MAIL ADDRESS			

### II. IDENTITY OF RESPONDENT

PERSON OR ENTITY COMMITTING ALLEGED VIOLATION(S)

6 RESPONDENT NAME	MS / MRS / MR	FIRST	MI
	NICKNAME	LAST	SUFFIX
7 RESPONDENT POSITION OR TITLE			
8 RESPONDENT PHYSICAL ADDRESS	ADDRESS (TO INCLUDE APT / SUITE # IF APPLICABLE)		CITY STATE ZIP CODE
	(Full home or business address, including street, city, state, and zip code)		





Texas Secretary of State  
ELECTIONS DIVISION



**Main Webpage**



# Texas Secretary of State

ELECTIONS DIVISION



[media](#) | [Site map](#) | [Help](#) | [Contact](#) | [Website Survey](#) | [En Español](#)

 **Texas Secretary of State**  
Jane Nelson

- [About SOS](#)
- [Elections & Voting](#)
- [Business Services](#)
- [Notary & Apostilles](#)
- [Rules & Meetings](#)
- [International Relations](#)
- [Forms & Other Services](#)



## Welcome to the Texas Secretary of State

Whether you are filing a business, wish to learn more about voting, or need assistance with another service, the Texas Secretary of State is here to serve you.



Secretary Jane Nelson

### Popular Services and Topics





# Texas Secretary of State

ELECTIONS DIVISION



[Media](#) | [Site Map](#) | [Help](#) | [Contact](#) | [Website Survey](#) | [En Español](#)



Texas Secretary of State  
Jane Nelson

- About SOS
- Elections & Voting**
- Business Services
- Notary & Apostilles
- Rules & Meetings
- International Relations
- Forms & Other Services

- VoteTexas.gov - Voter Information
- Voter Registration Resources
- Conducting Elections
- Candidate Information
- Officials and Officeholders
- Election Results
- Audit Program
- Training and Educational Resources
- Election Funds Management
- Forms, Resources and Legal Library
- Voting Systems
- Frequently Asked Questions (FAQS)
- Contact Us



## Welcome to the Texas Secretary of State

Whether you are filing a business, wish to learn more about voting, or need assistance with another service, the Texas Secretary of State is here to serve you.



Secretary Jane Nelson



SOSD

Popular or New





Election Notice: Election Night Returns

EFFECTIVE SEPTEMBER 1, 2023, OUR LOBBY WALK-IN HOURS WILL BE 9 A.M. - 4 P.M. (CENTRAL), MONDAY - FRIDAY.

[Media](#) | [Site Map](#) | [Help](#) | [Contact](#) | [Website Survey](#) | [En Español](#)

[About  
SOS](#)

[Elections  
& Voting](#)

[Business  
Services](#)

[Notary &  
Apostilles](#)

[Rules &  
Meetings](#)

[International  
Relations](#)

[Forms &  
Other  
Services](#)

## Voter Registration Resources

- [Registering to Vote](#)
- [High School Deputy Voter Registrars](#)
- [Voter Registration Agencies](#)
- [Confidentiality Programs](#)
- [Volunteer Deputy Registrars](#)

- NEW: SOS Modernization Program
- SOSDirect -Business Filings
- Business Copies and Certificates
- Uniform Commercial Code
- Texas Businesses Against Trafficking
- VoteTexas.gov - Voter Information
- Website Policies
- Open Records
- Texas.gov
- Contacts
- Texas State Library & Archives
- Texas Homeland Security
- Where the Money Goes
- Fraud Reporting
- Texas Veterans Portal





## Conducting Your Elections

### Laws and Procedures Pertaining to:

- [County Chairs of Political Parties](#)
- [County Election and Voter Registration Officials](#)
- [Local Election Official \(Cities, Schools, and Other Political Subdivisions\)](#)

### Notable Links

- [Texas Election Security Update](#)
- [Election Officials and Officeholders](#)
- [Election Forms](#)
- **Revised:** [Election Complaint to the Secretary of State \(PDF\)](#)
- [Elections Acronyms and Abbreviations](#)
- **Revised:** [Elections Glossary \(For All Election Officials\)](#)
- [Glossary of Spanish Terminology/Términos de Elecciones](#)
- [Texas Election Code](#) (Texas Legislative Council)
- **Revised:** [Poll Watcher's Guide \(PDF\)](#)
- [Central Counting Station Handbook \(PDF\)](#)
- [Early Voting Ballot Board Handbook \(PDF\)](#)
- [Signature Verification Committee Handbook \(PDF\)](#)
- [County Chair Handbook \(PDF\)](#)
- [Election Workers Handbook \(PDF\)](#)

### Outreach

- [VoteTexas.gov](#)
- [Project V.O.T.E.](#)



#### Voter ID Requirements

##### REVISED:

[Acceptable Forms of Identification \(PDF\)](#)

[Notice of Acceptable Identification Poster \(English\) 8.5x11 \(PDF\)](#)

[11x17 \(PDF\)](#)

[24x36 \(PDF\)](#)

[Notice of Acceptable Identification Poster \(Spanish\) 8.5x11 \(PDF\)](#)

[11x17 \(PDF\)](#)

[24x36 \(PDF\)](#)

[VoteReady Information Card English \(PDF\)](#)

[Spanish \(PDF\)](#)

[Forms](#)

#### Court Orders

[Archived Court Orders](#)







<https://www.sos.state.tx.us/elections/laws/local-laws.shtml>

## Laws and Procedures Pertaining to Local Election Officials (Cities, Schools and Other Political Subdivisions)

### 2024 Election Advisories and Memos

**New:** [No.2024-38](#) - June 7, 2025 Runoff Election Law

• [Calendar\(Extended Version\)](#) and [Condensed Election Law Calendar](#)

**New:** [No.2024-37](#) - May 3, 2025 Election Law

• [Calendar \(Extended Version\)](#) and [Condensed Election Law Calendar](#)

• [No.2024-36](#) - Partial Manual Count after the November 5, 2024 Uniform Election Date

• [No.2024-35](#) - Partial Manual Count after the November 5, 2024 Election Date

• [No.2024-34](#) - Canvass and Recount Deadlines for the November 5, 2024 Elections of Cities, School Districts and Other Political Subdivisions

• [No.2024-33](#) - Canvass and Recount Deadlines for the November 5, 2024 General Election for Federal, State, and County Officers

• [No.2024-32](#) - Post-Election Procedures and Qualifying for Office for the November 5, 2024 Uniform Election Date

• [No.2024-31](#) - Limited-Term Driver's License and Identification Card (Updated Guidance)

• [No.2024-30](#) - Limited-Term Driver's License and Identification Card

• [No.2024-29](#) - Certain Activities in Vicinity of Polling Places

• [No.2024-28](#) - Required Oaths for Election Officers

### Election Forms

### General Election Information

- [Current Election Information](#)
- [Important Election Dates 2024-2025](#)

### New to Elections?

- [Elections 101 \(PPT\)](#)
- [Elections 101 outline - coming soon!](#)
- [Election Glossary | Spanish](#)
- [Election Acronyms](#)
- [New Elections Administrators - Coming Soon!](#)

### Handbooks and Guides

- [County Chair Handbook \(PDF\)](#)
- [Election Judges and Clerks Handbook \(PDF\)](#)
- [Early Voting Ballot Board Handbook \(PDF\)](#)
- [Signature Verification Committee Handbook \(PDF\)](#)
- [Poll Watcher's Guide \(PDF\)](#)
- [Central Counting Station Handbook \(PDF\)](#)
- [Handbook Request Form](#)
- [Online Pollworker Training](#)
- [Election Workers Handbook \(PDF\)](#)

### Candidacy Corner





<https://www.sos.state.tx.us/elections/laws/local-laws.shtml>

<p>Identification Card</p> <ul style="list-style-type: none"> <li>• <a href="#">No.2024-29</a> - Certain Activities in Vicinity of Polling Places</li> <li>• <a href="#">No.2024-28</a> - Required Oaths for Election Officers and Poll Watchers</li> <li>• <a href="#">No.2024-27</a> - Limited Ballot Voters and District Chart (Chapters 111 and 112, Texas Election Code)</li> <li>• <a href="#">No.2024-26</a> - Additional Instructions for Preparation of Ballot for Write-In Candidates, Independent Candidates, and Legend Printing Instructions</li> <li>• <a href="#">No.2024-25</a> - Ballot Preparation and Sample Ballots for November 5, 2024 General Election</li> <li>• <a href="#">No.2024-24</a> - Presidential Ballot (Chapter 113, Texas Election Code)</li> <li>• <a href="#">No.2024-23</a> - Appointment Procedures for County Election Precinct Presiding and Alternate Judges, Election Clerks, Early Voting Ballot Board Members, Signature Verification Committee Members, and Central Counting Station Personnel</li> <li>• <a href="#">No.2024-22</a> - Minority Language Requirements</li> <li>• <a href="#">No.2024-21</a> - Updated Ballot Numbering Requirements</li> <li>• <a href="#">No.2024-20</a> - Emergency Guidance on Voter Privacy</li> <li>• <a href="#">No.2024-19</a> - Citizenship Requirements for Texas Elections</li> <li>• <a href="#">No.2024-18</a> - Required List Maintenance Activities</li> <li>• <a href="#">No.2024-17</a> - November 5, 2024 Election and December 14, 2024 Runoff Election Law Calendar</li> <li>• <a href="#">No.2024-16</a> - Partial Manual Count after the May 28, 2024 Primary Runoff Election Date</li> <li>• <a href="#">No.2024-15</a> - Canvass and Recount Deadlines for the</li> </ul>	<ul style="list-style-type: none"> <li>• <a href="#">Online Pollworker Training</a></li> <li>• <a href="#">Election Workers Handbook (PDF)</a></li> </ul> <p><b>Candidacy Corner</b></p> <ul style="list-style-type: none"> <li>• <a href="#">Candidacy for Local Political Subdivisions</a></li> <li>• <a href="#">Voter Registration for Candidates</a></li> <li>• <a href="#">Terms, Qualifications, and Vacancies</a></li> <li>• <a href="#">Qualifications for Local Political Subdivisions</a></li> <li>• <a href="#">Filing as a Candidate in a Local General Election</a></li> <li>• <a href="#">Procedures for Write-in Candidate in a Local Election</a></li> <li>• <a href="#">Local Election to fill a Vacancy – Running for an Unexpired Term</a></li> <li>• <a href="#">Frequently Asked Questions on Candidacy</a></li> </ul> <p><b>Election Resources</b></p> <ul style="list-style-type: none"> <li>• <b>New:</b> <a href="#">COVID-19 Resources for Election Officials</a></li> <li>• <a href="#">2024 Texas Election Security Update</a></li> <li>• <a href="#">Voting by Mail Resources</a> <ul style="list-style-type: none"> <li>• <a href="#">Dear Voter Letter (PDF)</a></li> <li>• <a href="#">FPCA Resources</a></li> </ul> </li> <li>• <a href="#">Cancellation of Election</a></li> <li>• <a href="#">Forms Manual</a></li> <li>• <a href="#">Local Option Liquor Elections</a></li> <li>• <a href="#">Mandatory ISD Joint Elections</a></li> <li>• <a href="#">Petitions</a></li> <li>• <a href="#">Recounts</a></li> <li>• <a href="#">Student Election Clerks</a></li> <li>• <a href="#">Texas Administrative Code - Elections</a></li> <li>• <a href="#">Voter Identification - Coming Soon!</a></li> </ul>
---	---





<https://www.sos.state.tx.us/elections/laws/recounts.shtml>

## Procedures to Request and Conduct a Recount

This outline summarizes Texas election law with respect to recounts as currently codified. We have made every effort to insure the accuracy of this summary outline, but this material cannot substitute for the statutory source material and relevant interpretive case law and administrative regulations. All statutory references are to the Texas Election Code (the "Code") unless otherwise noted.

Recount request deadlines occur soon after the canvass, and as noted below, a recount must be requested not later than two days following the canvass.

### I. Introduction:

#### A. Recount Basics

1. A recount is **only** used to recount the votes in a particular race (office) or measure.
2. A recount does not have the scope of an election contest in court. This means that a recount does not look at the manner in which voters were qualified to vote in person or by mail.
3. The governing body of an entity cannot conduct a recount on its own motion, e.g., at the canvass.
4. Any entry into the ballot box other than in response to a proper recount request or in accordance with other Code procedures (e.g., election contest, criminal investigation) is an **unauthorized entry carrying criminal penalties**.

#### B. Common Misconceptions Regarding Recounts

1. A recount is not an Election Contest;
2. A recount DOES NOT delay canvassing, but the canvassing authority must make a note on the canvass that a recount has been requested. Submission of a recount petition delays the issuance of a certificate of election and qualification for the office involved in the recount pending completion of recount;
3. A recount DOES NOT authorize the requalifying of voters; and
4. A recount DOES NOT authorize more than one recount of a race or measure. If a petition to request a recount





<https://www.sos.state.tx.us/elections/laws/candidacy.shtml>

## Candidacy Filing - Local Political Subdivisions

**NOTE:** This outline addresses the general requirements for candidacy for local political subdivisions such as cities, school districts, water districts, hospital districts, etc. All sections refer to the Texas Election Code unless otherwise cited.

### I. Filing for Public Office in Local Political Subdivision

#### A. Independent Candidacy Required.

**General Rule:** A candidate for local office may appear on the ballot only as an independent candidate. [Sec. 143.002]

**EXCEPTION:** Partisan candidacy for home-rule city office may be authorized by city charter. [Sec. 143.003]

#### B. Application Required (need not be on official form).

1. General Requirements for Application: [Sec. 141.031]

- a. In writing.
- b. Signed and sworn to by the candidate.

**NOTE:** The oath must be administered by a person authorized to administer an oath under Texas law. [Sec. 602.002, Government Code]

**TIP:** The city secretary may administer the oath for applications for a place on the ballot for city offices. [Sec. 602.002(15)]

- c. Indicates the date that the candidate swore to the application;
- d. Timely filed with the appropriate authority; and
- e. Includes:

i. The candidate's name





<https://www.sos.state.tx.us/elections/laws/liquorelections.shtml>

## Local Option Liquor Elections

This outline summarizes Texas local option liquor election law as currently codified. We have made every effort to ensure the accuracy of this summary outline, but this material cannot substitute for the statutory source material and relevant interpretive case law and administrative regulations. All references are to the Texas Election Code ("the Code") unless otherwise noted. References to a justice precinct mean a justice of the peace precinct, and references to a city are equivalent to a reference to "town" or "municipality." References to the county clerk should be read as a reference to the entity that is tasked with running elections for the county, be it an elections administrator, tax assessor collector, or voter registrar.

Article XVI, Section 20 of the Texas Constitution; Chapter 501, Texas Election Code; and Chapter 251, Texas Alcoholic Beverage Code are specific to local option liquor elections. For historical and public policy reasons, the procedures for these elections differ in many respects from the procedures applied to other voter-initiated elections. You should not extrapolate or apply the procedures explained here to any other type of petition-driven election.

### I. Overview of Texas Laws Relating to the Sale or Prohibition of Liquor

Although Texas laws controlling the sale of liquor date back to the founding of the Republic following independence from Mexico, local option law in its current form has been largely unchanged since Article XVI, Section 20 of the Constitution was adopted in 1891. The blanket prohibition of all alcohol sales under state (and then federal) law, (along with the state prohibition on the manufacture of alcohol) merely interrupted the application of the older local option liquor law between February 1918 and August 1935.

As to the default status of territory in Texas with respect to the legal sale of alcohol, the Texas Supreme Court noted:

[T]he entire state, as such, is ... *wet as to all intoxicating liquors*; but with certain exceptions and limitations. In effect, [Article XVI, § 20, Texas Constitution] contains provisions which make any county, justice's precinct, or city, or town dry which was dry at the time it became effective. In other words, this amendment preserves the status quo as to dry areas as they existed at the time it became effective. It therefore preserved as dry any county, justice's precinct, or city, or town which was dry when it went into effect. Of course, any such area has the right to become wet by so voting at an election legally ordered and held for that purpose under present local option statutes. *Houchins v. Plainos*, 110 S.W.2d 549, 553 (Tex. 1937) (emphasis added).







## Candidate Information

### Current Election Information

- [Current Election Information](#)

### Procedures for Candidates, 2023-2024

- [2024 Candidate's Guide - Running for Federal, State, District or County Office.](#)
- [2023 Candidate's Guide - Running for State, District or County Office.](#)
- [Candidate's Guide for Local Political Subdivisions](#)



### Notable Links

- [Poll Watcher's Guide \(PDF\)](#)
- [Early Voting Ballot Board Handbook \(PDF\)](#)
- [Signature Verification Committee Handbook \(PDF\)](#)
- [County Chair Handbook \(PDF\)](#)
- [Public Information Request \(PDF\)](#)
- [Election Forms](#)
- [Texas Ethics Commission - Campaign-Related Forms and Filing Requirements](#)
- [Federal Election Commission](#)
- [Election Officials and Officeholders](#)

### Calendars

- [Important 2024-2025 Election Dates](#)

### Political Party Information

- [Republican Party](#)
- [Democratic Party](#)
- [Libertarian Party](#)
- [Green Party](#)





<https://www.sos.state.tx.us/elections/candidates/candidate%E2%80%99s-guide-for-local-political-subdivisions.shtml>

### Candidate's Guide for Local Political Subdivisions

Requirements for local offices (municipalities, school districts, other districts) in Texas vary according to the political subdivision. Therefore, you must contact the political subdivision where you are interested in running for office for qualification requirements, filing periods and other relevant information. At a minimum, you will be required to file an application for place on the ballot with your political subdivision.

For general information regarding local elections, please see our outlines for:

- [Qualifications for Local Political Subdivisions](#)
- [Filing as a Candidate in a Local General Election](#)
- [Procedures for Write-in Candidate in a Local Election](#)
- [Local Election to fill a Vacancy - Running for an Unexpired Term](#)
- [Frequently Asked Questions on Candidacy](#)
- [Candidacy for Local Political Subdivisions](#)
- [Terms, Qualifications and Vacancies](#)
- [Voter Registration for Candidates FAQ](#)

#### Municipal Elections

In a city election, an application for place on the ballot must be filed with the city secretary. In a special election held by a city, an application for a place on the special election ballot must be filed with the city secretary.

Some municipalities may require their candidates to file a petition with a certain number of signatures along with an application for place on the ballot .

#### School District Elections

#### Candidate's Guide Quick Links

[2024 Candidate's Guide Home](#)

[2022 Candidate's Guide Home](#)





## Election Officials and Officeholders

### County Officials

- [Early Voting Clerks for State and County Elections](#)
- [Election Officials](#)
- [Voter Registration Officials](#)
- [County Clerks](#)
- [County Judges](#)
- [Tax Assessor - Collectors](#)
- [Sheriffs](#)
- [Treasurers](#)
- County Chairs
  - [Democratic Party](#)
  - [Republican Party](#)
  - [Libertarian Party](#)
  - [Green Party](#)
- [County and Precinct Chair Listing](#)

For Other County "Elected" Officials, please call us at 1.800.252.8683

### State and District Elected Officials

- [Statewide Elected Officials](#)
- [Statewide and Court of Appeals Judges](#)
- [Find Your Incumbent - Who Represents Me?](#)
- [Texas Senate](#)
- [Texas House of Representatives](#)





## Training and Education Resources

### Law Enforcement

- [Law Enforcement and Elections \(PDF\)](#)
- [Law Enforcement Election Quick Guide \(PDF\)](#)
- [Law Enforcement Guide \(PDF\)](#)

### Poll Worker Training

- [Online Poll Worker Training Memo](#)
- [Online Poll Worker Training](#)
- [Election Judges and Clerks Handbook \(PDF\)](#)
- [Early Voting Ballot Board Handbook \(PDF\)](#)
- [Central Counting Station Handbook \(PDF\)](#)
- [Signature Verification Committee Handbook \(PDF\)](#)

### Volunteer Deputy Registrars

- [Volunteer Deputy Registrar Training \(PDF\)](#) | [Spanish \(PDF\)](#)

### Poll Watchers

- [Poll Watcher Training](#)
- [Poll Watchers Guide \(PDF\)](#)

### Election Inspectors

- [Election Inspector Handbook \(PDF\)](#)

### Voter Education Outreach

- [Project V.O.T.E.](#) - A resource for teachers, educators and students
- [VoteTexas.gov](#) - Voter information ranging from registering to vote to questions on voter I.D

### Election Law Seminar





### Election Official Training Materials

#### Current Webinars

Topic	Date/Time	Presentation Materials
<b>Webinars for 2024 November Uniform Election</b>		
<a href="#">Wrapping Up Your Elections (Video)</a>	11/14/2024 2:00 PM	<a href="#">Wrapping Up Your Elections (PDF)</a>
<a href="#">Preparing the Partial Manual Count (Video)</a>	10/17/2024 2:00 PM	<a href="#">Preparing the Partial Manual Count (PDF)</a>
<a href="#">Conducting Recounts (Video)</a>	10/15/2024 2:00 PM	<a href="#">Conducting Recounts (PDF)</a>
<a href="#">Canvassing and Post-Election Requirements (Video)</a>	10/10/2024 2:00 PM	<a href="#">Canvassing and Post-Election Requirements (PDF)</a>
<a href="#">Steps to Reconciling Your Election (Video)</a>	10/08/2024 2:00 PM	<a href="#">Steps to Reconciling Your Election (PDF)</a>
<a href="#">Central Counting Station (Video)</a>	10/03/2024 2:00 PM	<a href="#">Central Counting Station (PDF)</a>
<a href="#">Weekly Updates from the SOS (Video)</a>	10/02/2024 2:00 PM	<a href="#">Weekly Updates from the SOS (PDF)</a>
<a href="#">Certain Activities in the Vicinity of the Polling Place (Video)</a>	10/01/2024 2:00 PM	<a href="#">Certain Activities in the Vicinity of the Polling Place (PDF)</a>
<a href="#">Corrective Action Procedures (Video)</a>	09/26/2024 2:00 PM	<a href="#">Corrective Action Procedures (PDF)</a>
<a href="#">Voter Identification Requirements and Resources (Video)</a>	09/24/2024 2:00 PM	<a href="#">Voter Identification Requirements and Resources (PDF)</a>
<a href="#">Limited Ballots, Provisional Ballots, and Presidential Ballots (Video)</a>	09/19/2024 2:00 PM	<a href="#">Limited Ballots, Provisional Ballots, and Presidential Ballots (PDF)</a>







# Texas Secretary of State

## ELECTIONS DIVISION



### 42nd Annual Election Law Seminar for County Elections Officials (2024)

- [Demystifying the Election Code \(PDF\)](#)
- [Voter Registration Responsibilities \(PDF\)](#)
- [Special Forms of Voting \(PDF\)](#)
- [Conducting the Partial Manual Count \(PDF\)](#)
- [Protecting Voter Privacy \(PDF\)](#)
- [Chapter 19/Voter Registration Postage Updates \(PDF\)](#)

### 35th Annual Election Law Seminar for Cities, Schools and Other Political Subdivisions (2023)

- [Contracting and Joint Elections Presentation \(PDF\)](#)
- [Duties of the Early Voting Clerk \(PDF\)](#)
- [Elections 101 \(PDF\)](#)
- [Legislative Update \(PDF\)](#)
- [Ordering Your Election \(PDF\)](#)
- [Preparing, Proofing and Counting Your Ballots \(PDF\)](#)
- [Setting Up a Polling Location \(PDF\)](#)
- [Vacancies and Special Elections \(PDF\)](#)
- [Candidacy Considerations and Public Information Implications \(PDF\)](#)
- [Candidate Packets for SOS \(PDF\)](#)
- [Canvassing and Post-Election Activities \(PDF\)](#)
- [Dual Office Holding, Incompatibility, and Conflicts of Interest \(PDF\)](#)
- [Early Voting Ballot Board & Signature Verification Committee Presentation \(PDF\)](#)
- [Local Elections for County Officials \(PDF\)](#)
- [Other Political Subdivisions \(PDF\)](#)
- [Poll Watchers and Poll Workers \(PDF\)](#)
- [School Districts \(PDF\)](#)
- [Reviewing Candidate Applications \(PDF\)](#)
- [Early Voting by Mail and Corrective Action \(PDF\)](#)
- [Web Posting Requirements and Best Practices \(PDF\)](#)
- [Cancellation of an Election \(PDF\)](#)





## Forms, Resources & Legal Library

The purpose of the Resource and Legal Library page is to provide a virtual Election Law Library. From this page, you can link to Election Forms, Election Law Opinions, the Texas Election Code, retrieve background on all United States Department of Justice (DOJ) submissions, and other relevant election information.

### Forms

- [Main Election Forms Manual](#)
- [Candidate Forms](#)
  - [Early Voting Forms](#)
  - [Election Day Forms](#)
  - [Voter Registration Forms](#)



- [County Chairs Forms](#)
- [Election Complaint Form \(PDF\)](#) Do not use this form for **campaign-related** complaints; contact [Texas Ethics Commission](#)
- [Inspector Request Form \(PDF\)](#)

### Resources

- [Important 2024-2025 Election Dates](#)
- [2024 Candidate's Guide](#)
- [Campaign Finance Information](#) (Texas Ethics Commission)
- [Countywide Polling Place Program \(CWPP\)](#)
- [Court Populations](#)
- [High School Voter Registration Applications Online Order Form](#)
- Handbooks
  - [Election Judges and Clerks Handbook \(PDF\)](#)
  - [Early Voting Ballot Board Handbook \(PDF\)](#)
  - [Poll Watcher's Guide \(PDF\)](#)
  - [Central Counting Station Handbook \(PDF\)](#)
  - [Signature Verification Committee Handbook \(PDF\)](#)
  - [County Chair Handbook \(PDF\)](#)





## Elections Form Index

**Note:** The links displayed within the forms section access PDF (Portable Document Format) files which can be accessed using the Adobe Acrobat Reader. Visit [Adobe.com](http://Adobe.com) to download your copy of Acrobat Reader. All PDF documents featured on this page are configured to print out on legal size paper.

**Note:** Some browsers use their own PDF readers. If you experience issues with the PDF documents below, we recommend opening these files with Adobe Acrobat.

Select a Form Category		
<ul style="list-style-type: none"><li>• <a href="#">Section 1 – Order and Notice of an Election</a></li><li>• <a href="#">Section 2 – Candidates</a></li><li>• <a href="#">Section 3 – Ballots</a></li><li>• <a href="#">Section 4 – Officers of Election</a></li><li>• <a href="#">Section 5 – Early Voting Clerk Responsibilities</a></li><li>• <a href="#">Section 6 – Early Voting by Mail</a></li><li>• <a href="#">Section 7 - Voting in Person</a></li><li>• <a href="#">Section 8 – Security and Chain of Custody</a></li></ul>	<ul style="list-style-type: none"><li>• <a href="#">Section 9 – Provisional Voting</a></li><li>• <a href="#">Section 10 – Early Voting Ballot Board/Signature Verification Committee</a></li><li>• <a href="#">Section 11 – Counting Votes</a></li><li>• <a href="#">Section 12 – Reconciliation Forms</a></li><li>• <a href="#">Section 13 – Cancellation of an Election</a></li><li>• <a href="#">Section 14 – Recount</a></li><li>• <a href="#">Section 15 – Logic and Accuracy Testing</a></li><li>• <a href="#">Section 16 – Election Technology (Voting Systems, Electronic Pollbooks)</a></li></ul>	<ul style="list-style-type: none"><li>• <a href="#">Section 17 – Local Option Elections</a></li><li>• <a href="#">Section 18 – Primary Elections</a></li><li>• <a href="#">Section 19 – Voter Registration Chapter 19 Funding</a></li><li>• <a href="#">Section 20 - Primary Finance</a></li><li>• <a href="#">Section 21 - Voter Registration</a></li><li>• <a href="#">Section 22 - Volunteer Deputy Registrar (including High Schools)</a></li><li>• <a href="#">Section 23 - Becoming an Elected Official</a></li><li>• <a href="#">Section 24 - Public Information</a></li><li>• <a href="#">Section 25 - Miscellaneous Forms</a></li></ul>



Section 17 - Local Option Elections						
Section / Form Number	Form Name	Form Link	Instructions / Notes	Legal Reference	Release Date	Previous Form Number
Subsection 1 - Local Option Elections						
17-1	Application for Local Option Election Petition to Legalize	<a href="#">Form</a>	<a href="#">Notes</a>	501.023	9/2023	15-1
17-2	Application for Local Option Election Petition to Prohibit	<a href="#">Form</a>	<a href="#">Notes</a>	501.023	9/2023	15-2
17-3	Petition for Local Option Election to Legalize	<a href="#">Form</a>	<a href="#">Notes</a>	501.026, 501.027, 501.028	9/2023	15-3
17-4	Petition for Local Option Election to Prohibit	<a href="#">Form</a>	<a href="#">Notes</a>	501.026, 501.027, 501.028	9/2023	15-4

[Back to Top](#)

Section 18 - Primary Elections						
Section / Form Number	Form Name	Form Link	Instructions / Notes	Legal Reference	Release Date	Previous Form Number
Subsection 1 - Notices for Elections and Candidate Filings						
18-1	Notice of Address for Filing Applications	<a href="#">Form</a>	<a href="#">Notes</a>	172.022(b)	9/2023	14-1
18-2	Public Notice of Extended Filing	<a href="#">Form</a>	<a href="#">Notes</a>	172.055	9/2023	14-2



# Texas Secretary of State

## ELECTIONS DIVISION



Form						
<b>Subsection 3 - Poll Watchers</b>						
4-26	Certificate of Appointment of Poll Watcher by Candidate	<a href="#">Form</a>		33.002, 33.006, 33.051	9/2023	4-20
4-27	Certificate of Appointment of Poll Watcher by Political Party	<a href="#">Form</a>		33.003, 33.006	9/2023	4-21
4-28	Certificate of Appointment for Poll Watcher For Proposition or Measure	<a href="#">Form</a>		33.005, 33.006, 33.051	9/2023	4-22
4-29	Certificate of Appointment of Poll Watcher by Registered Voter on Behalf of a Write-in Candidate	<a href="#">Form</a>		33.004, 33.006, 33.051	9/2023	4-23
4-30	Certificate of Appointment of a Representative by a Candidate for Partial Manual Count	<a href="#">Form</a>	<a href="#">Notes</a>	127.201(d)	9/2023	4-24
4-31	Election Day Poll Watcher Information Sheet	<a href="#">Form</a>			2/2024	
4-32	Early Voting Poll Watcher Information Sheet	<a href="#">Form</a>			2/2024	
<b>Subsection 4 - Inspectors</b>						
4-35	Request for Inspectors	<a href="#">Form</a>	<a href="#">Notes</a>	34.001	9/2023	4-19





## Contact Us

### Contact Information

#### Section Mailing Address:

Elections Division  
Secretary of State  
P.O. Box 12060  
Austin, Texas 78711-2060

#### Phone Numbers

1.800.252.VOTE (8683)  
512.463.5650  
[Our agency email](#)

#### Section Physical Address:

Elections Division  
Secretary of State  
James E. Rudder Bldg.  
1019 Brazos St.  
Austin, Texas 78701

#### Need to File an Election Complaint?

[Complaint Form \(PDF\)](#) Do not use this form for **campaign-related** complaints; contact [Texas Ethics Commission](#)

### Section Hours of Operation:

8:00 a.m. to 5:00 p.m. Central Time, Monday through Friday.

### Section Directory:

Christina Adkins, Director of Elections



## Forms, Resources & Legal Library

The purpose of the Resource and Legal Library page is to provide a virtual Election Law Library. From this page, you can link to Election Forms, Election Law Opinions, the Texas Election Code, retrieve background on all United States Department of Justice (DOJ) submissions, and other relevant election information.

### Forms

- [Main Election Forms Manual](#)
  - [Candidate Forms](#)
  - [Early Voting Forms](#)
  - [Election Day Forms](#)
  - [Voter Registration Forms](#)
- [County Chairs Forms](#)
- [Election Complaint Form \(PDF\)](#) Do not use this form for **campaign-related** complaints; contact [Texas Ethics Commission](#)
- [Inspector Request Form \(PDF\)](#)

### Resources

- [Important 2024-2025 Election Dates](#)
- [2024 Candidate's Guide](#)
- [Campaign Finance Information](#) (Texas Ethics Commission)
- [Countywide Polling Place Program \(CWPP\)](#)
- [Court Populations](#)
- [High School Voter Registration Applications Online Order Form](#)
- Handbooks
  - [Election Judges and Clerks Handbook \(PDF\)](#)
  - [Early Voting Ballot Board Handbook \(PDF\)](#)
  - [Poll Watcher's Guide \(PDF\)](#)
  - [Central Counting Station Handbook \(PDF\)](#)
  - [Signature Verification Committee Handbook \(PDF\)](#)
  - [County Chair Handbook \(PDF\)](#)





### Important Election Dates 2024-2025

[2024](#)

[2025](#)

#### Important 2024 Election Dates

Longer calendars are on the [Conducting Your Elections](#) pages when available.

Tuesday, March 5, 2024 - Primary Election	
First day to file for a place on the Primary ballot for precinct chair candidates.	Tuesday, September 12, 2023
First day to file for all other candidates for offices that are regularly scheduled to be on the Primary ballot; first day for independent candidates to file declaration of intent.	Saturday, November 11, 2023
Filing deadline for primary candidates; filing deadline for independent candidates to file declaration of intent.	Monday, December 11, 2023 at 6:00 PM
First day to apply for a ballot by mail using Application for a Ballot by Mail (ABBM) or Federal Postcard Application (FPCA).	Monday, January 1, 2024*  *First day to file does not move because of New Year's Day holiday. An "Annual ABBM" or FPCA for a January or February 2024 election may be filed earlier, but not earlier than the 60th day before the date of the January or February election.
Last Day to Register to Vote	Monday, February 5, 2024
First Day of Early Voting	Tuesday, February 20, 2024*

### Important 2025 Election Dates

May 3, 2025 - Uniform Election Date	
Authority Conducting Elections	Local Political Subdivisions and Counties
Deadline to post candidate requirements <sup>5</sup> <a href="#">Form 1-20</a>	Friday, May 3, 2024
Deadline to post notice of candidate filing deadline <sup>1</sup>	Monday, December 16, 2024 for local political subdivisions that have a first day to file for their candidates <sup>1</sup>
First day to apply for a ballot by mail using Application for a Ballot by Mail (ABBM) or Federal Post Card Application (FPCA)	Wednesday, January 1, 2025*  <i>*First day to apply does not move because of New Year's Day holiday. An "Annual ABBM" or FPCA for a January or February 2025 election may be filed earlier, but not earlier than the 60th day before the date of the January or February election.</i>
First Day to File for Place on General Election Ballot (for local political subdivisions ONLY) <sup>1</sup>	Wednesday, January 15, 2025
Last Day to File for Place on General Election Ballot (for local political subdivisions ONLY) <sup>2</sup>	Friday, February 14, 2025 at 5:00 p.m.  See note below relating to four-year terms <sup>3</sup>
Last Day to Order General Election or Election on a Measure	Friday, February 14, 2025
Last Day to Register to Vote	Thursday, April 3, 2025
First Day of Early Voting by Personal Appearance	Tuesday, April 22, 2025*  *First business day after San Jacinto Day





## Forms, Resources & Legal Library

The purpose of the Resource and Legal Library page is to provide a virtual Election Law Library. From this page, you can link to Election Forms, Election Law Opinions, the Texas Election Code, retrieve background on all United States Department of Justice (DOJ) submissions, and other relevant election information.

### Forms

- [Main Election Forms Manual](#)
  - [Candidate Forms](#)
  - [Early Voting Forms](#)
  - [Election Day Forms](#)
  - [Voter Registration Forms](#)
- [County Chairs Forms](#)
- [Election Complaint Form \(PDF\)](#) Do not use this form for **campaign-related** complaints; contact [Texas Ethics Commission](#)
- [Inspector Request Form \(PDF\)](#)

### Resources

- [Important 2024-2025 Election Dates](#)
- [2024 Candidate's Guide](#)
- [Campaign Finance Information](#) (Texas Ethics Commission)
- [Countywide Polling Place Program \(CWPP\)](#)
- [Court Populations](#)
- [High School Voter Registration Applications Online Order Form](#)
- Handbooks
  - [Election Judges and Clerks Handbook \(PDF\)](#)
  - [Early Voting Ballot Board Handbook \(PDF\)](#)
  - [Poll Watcher's Guide \(PDF\)](#)
  - [Central Counting Station Handbook \(PDF\)](#)
  - [Signature Verification Committee Handbook \(PDF\)](#)
  - [County Chair Handbook \(PDF\)](#)





## High School Deputy Voter Registrars

By virtue of being a high school principal in Texas, you are required to serve as a deputy voter registrar for the county in which your school is located. This requirement has been enshrined in Texas law since the 1980s, ensuring that eligible high school students have the opportunity to register to vote using resources made available by their high school principals.

The Texas Election Code (TEC) Sections [31.003](#) and [13.046](#), the Texas Administrative Code Chapter 81, and the National Voter Registration Act (NVRA) outline requirements for public and private high school principals to act as deputy voter registrars to provide voter registration opportunities to eligible high school students and campus employees.

The campus principal may designate an administrative staff member or teacher, in writing, to serve as the high school deputy registrar.

### Responsibilities of a High School Deputy Registrar:

- High school deputy voter registrars should obtain [voter registration applications](#) and materials from their school board administrator or the Secretary of State.
- Though the high school deputy voter registrar may distribute voter registration applications to eligible students and staff throughout the year, during the final month of each semester, they are required to distribute voter registration applications along with a [notice \(PDF\)](#) informing students how to return their completed voter registration application. The Secretary of State encourages all schools to establish a practice of providing all eligible students voter registration applications upon turning 18 years of age.
- Upon request by the applicant, the high school deputy registrar may provide assistance to a student or employee filling out the application form.
- Upon receipt of an application, the high school deputy registrar should review the voter registration application for completeness and may return it to the applicant for completion, if needed.



### Where to Get Applications:





- [Election Workers Handbook \(PDF\)](#)

- [Printers Registered with the Secretary of State](#)
- [Rollback Elections \(Texas Comptroller's Office\)](#)
- [Texas Poll Worker Training](#)
- [Volunteer Deputy Registrar Resources](#)

## Legal Library

- [Texas Election Code](#)
- [Texas Administrative Code – Elections](#)
- [Texas Constitution](#)
- [Election Glossary](#)
- [Elections Acronyms and Abbreviations](#)
- [Glossary of Spanish Terminology/Términos de Elecciones](#)
- Court Orders
  - [Archived Court Orders](#)
- [Elections Division Advisories](#)
- [Election Law Opinions](#)
- [DOJ Preclearance History](#)
- [Reports to Legislature](#)



- [NEW: SOS Modernization Program](#)
- [SOSDirect -Business Filings](#)
- [Business Copies and Certificates](#)
- [Uniform Commercial Code](#)
- [Texas Businesses Against Trafficking](#)

- [VoteTexas.gov - Voter Information](#)
- [Website Policies](#)
- [Open Records](#)
- [Texas.gov](#)
- [Contacts](#)

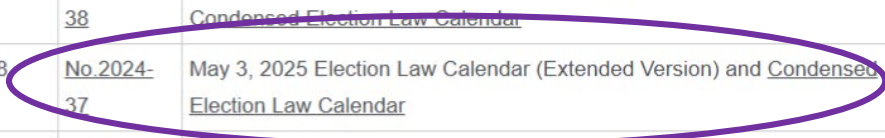
- [Texas State Library & Archives](#)
- [Texas Homeland Security](#)
- [Where the Money Goes](#)
- [Fraud Reporting](#)
- [Texas Veterans Portal](#)





## Elections Division Advisories

2024 Advisories and Memos		
Release Date	Advisory Number	Advisories and Memos
November 18, 2024	<a href="#">No.2024-38</a>	June 7, 2025 Runoff Election Law Calendar (Extended Version) and <a href="#">Condensed Election Law Calendar</a>
November 18, 2024	<a href="#">No.2024-37</a>	May 3, 2025 Election Law Calendar (Extended Version) and <a href="#">Condensed Election Law Calendar</a>
November 6, 2024	<a href="#">No.2024-36</a>	Partial Manual Count after the November 5, 2024 Uniform Election Date
November 6, 2024	<a href="#">No.2024-35</a>	Partial Manual Count after the November 5, 2024 Election Date
October 30, 2024	<a href="#">No.2024-34</a>	Canvass and Recount Deadlines for the November 5, 2024 Elections of Cities, School Districts and Other Political Subdivisions
October 30, 2024	<a href="#">No.2024-33</a>	Canvass and Recount Deadlines for the November 5, 2024 General Election for Federal, State, and County Officers
October 30, 2024	<a href="#">No.2024-32</a>	Post-Election Procedures and Qualifying for Office for the November 5, 2024 Uniform Election Date
October 11, 2024	<a href="#">No.2024-31</a>	Limited-Term Driver's License and Identification Card (Updated Guidance)
October 8, 2024	<a href="#">No.2024-30</a>	Limited-Term Driver's License and Identification Card
October 1, 2024	<a href="#">No.2024-29</a>	Certain Activities in Vicinity of Polling Places
September 19, 2024	<a href="#">No.2024-28</a>	Required Oaths for Election Officers and Poll Watchers





# Texas Secretary of State

## ELECTIONS DIVISION



### Election Advisory No. 2024-37

#### May 3, 2025 Election Law Calendar (Condensed)

Date	Description	Computation	Applicable Forms & Instructions	Legal Authority (TEX. ELEC. CODE Unless Otherwise Specified)
Monday, December 16, 2024	<p><b>NOTICE OF DEADLINE FOR CANDIDATE APPLICATION:</b> Post <a href="#">Notice of Deadline to File an Application for Place on the Ballot (PDF)</a> in a building in which the authority maintains an office.</p> <p><b>NOTE FOR WATER DISTRICTS:</b> The notice must be posted at the district's administrative office or at the public place established by the district under Section 49.063 of the Water Code. (Sec. 49.113, Water Code).</p>	30th day before the first day to file an application for a place on the ballot	<a href="#">Candidate's Guide for Local/Political Subdivisions</a>  <a href="#">Notice of Deadline to File an Application for Place on the Ballot (PDF)</a>	§1.007 §141.031 §141.039  <b>Water Code</b> §141.040 §49.113  <b>Education Code</b> §11.066  <b>Government Code</b> §2051.201
Wednesday,	<b>NOTICE FOR ABBMs:</b> First day for		<a href="#">ABBM</a>	§84.001(e)

				§63.0945
Wednesday, February 19, 2025	<p><b>DEATH OF CANDIDATE:</b> If a candidate dies on or before the deadline for filing an application for a place on the ballot, the authority responsible for preparing the ballots MAY choose to omit the candidate's name. If the authority does choose to omit the candidate's name, the deadline for filing an application for a place on the ballot is extended to the fifth day after the filing deadline, February 19, 2025. This extended deadline only applies to the regular filing deadline. It <b>DOES NOT</b> apply to the write-in deadline.</p>	73rd day before election day; 5th day after regular filing deadline		§145.098
Thursday, February 20, 2025	<p><b>NOTICE OF BALLOT DRAWING:</b> First day to post <a href="#">Notice of Drawing for Place on Ballot (PDF)</a> if drawing is to be conducted on Monday, February 24, 2025. This notice must be posted for 72 hours immediately preceding the time of the drawing.</p> <p>The authority conducting the ballot position drawing shall provide notice of the date, hour, and place of the drawing to candidates by this date if the drawing is to be conducted on Monday, February 24, 2025, as</p>	72nd day before election day	<a href="#">Notice of Drawing for Place on Ballot (PDF)</a>	§52.094





<https://www.sos.state.tx.us/elections/laws/address-confidentiality.shtml>

## Address Confidentiality

### General Confidentiality

Under Section 18.005 of the Texas Election Code, a person's name, date of birth, and voter identification number are public information. Additionally, what elections you voted in (but not how you voted) is also public information. The county registrar (and the Secretary of State's office) are required by law to respond to a request for public information. While all voters can request that their information be suppressed from the web, a voter's information will still remain subject to disclosure under the [Public Information Act](#).

That does not mean everything about your voter registration records is available. A voter's social security number, Texas driver's license number, and number of a personal identification card issued by the Department of Public Safety are confidential and do not constitute public information. ([Section 13.004, Election Code](#), and the [National Voter Registration Act \(PDF\)](#)).

Additionally, the voter registrar may not transcribe, copy, or otherwise record a telephone number furnished on a registration application, but may transcribe, copy, or otherwise record a social security number furnished on a registration application only in maintaining the accuracy of registration records. (Section 13.004(a) and (b), Election Code).

Finally, date of birth is confidential for all voters, unless the request is for a list of voters with voter information under [Chapter 18 of the Election Code](#). *Paxton v. City of Dallas*, 2015 WL 3394061 (Tex. App.—Austin May 22, 2015, pet. denied) (mem. op.). [Section 18.005, Election Code](#) provides that date of birth must be contained on the original and supplemental list of registered voters. Therefore, when providing a list of voters pursuant to Chapter 18 of the Texas Election Code, date of birth may be released.


For example, if a person requests an individual's voter registration information, the voter's date of birth would be confidential. However, if a person asked for a list of all registered voters, then the date of birth for all registered voters would not be redacted.

### Alternate Address Program Through the Department of Public Safety (DPS)





## https://statutes.capitol.texas.gov/Index.aspx



Texas Constitution and Statutes  
**Home**

[Home](#) | [Search](#) | [Download](#) | [Statutes By Date](#) [Contact](#)

**The statutes available on this website are current through the 88th 4th Called Legislative Session, 2023. The constitutional provisions found on this website are current through the amendments approved by voters in November 2023.**

[Hide Quick Search](#)

Code:	<input type="text" value="Select Code"/>
Article/Chapter:	<input type="text"/>
Art./Sec.:	<input type="text"/>
	<input type="button" value="Go"/> <input type="button" value="Reset"/>

TEXAS CONSTITUTION  
 TEXAS STATUTES

[Home](#) | [Search](#) | [Download](#) | [Statutes By Date](#) | [Top](#)





<https://statutes.capitol.texas.gov/Index.aspx>

Contact

Texas Constitution and Statutes  
**Home**

[Home](#) | [Search](#) | [Download](#) | [Statutes By Date](#)

The statutes available on this website are current through the 88th 4th Called Legislative Session, 2023. The constitutional provisions found on this website are current through the amendments approved by voters in November 2023.

[Hide Quick Search](#)

<b>Code:</b>	<div style="border: 1px solid #ccc; padding: 2px;"> <span style="background-color: #4a7c9c; color: white; padding: 2px;">Select Code</span> </div>	
<b>Article/Chapter:</b>	<div style="border: 1px solid #ccc; padding: 2px;"> <span style="background-color: #4a7c9c; color: white; padding: 2px;">Select Code</span> </div>	
<b>Art./Sec.:</b>	<div style="border: 1px solid #ccc; padding: 2px;"> <span style="background-color: #4a7c9c; color: white; padding: 2px;">The Texas Constitution</span> </div>	

- TEXAS CONSTITUTION
- TEXAS STATUTES

- The Texas Constitution
- Agriculture Code
- Alcoholic Beverage Code
- Auxiliary Water Laws
- Business and Commerce Code
- Business Organizations Code
- Civil Practice and Remedies Code
- Code of Criminal Procedure
- Education Code
- Election Code
- Estates Code
- Family Code
- Finance Code
- Government Code
- Health and Safety Code
- Human Resources Code
- Insurance Code
- Insurance Code - Not Codified
- Labor Code

[Home](#) | [Search](#) | [Download](#) | [Statutes By Date](#) | [Top](#)



<https://statutes.capitol.texas.gov/Index.aspx>

Texas Constitution and Statutes

**Home**

Contact

Home
Search
Download
Statutes By Date

The statutes available on this website are current through the 88th 4th Called Legislative Session, 2023. The constitutional provisions found on this website are current through the amendments approved by voters in November 2023.

Hide Quick Search

<b>Code:</b>	<input type="text" value="Election Code"/>
<b>Article/Chapter:</b>	<input type="text" value="CHAPTER 84. APPLICATION FOR BALLOT"/>
<b>Art./Sec.:</b>	<input type="text" value="Select Art./Sec."/>

Select Art./Sec.

Sec. 84.001. APPLICATION REQUIRED

Sec. 84.002. CONTENTS OF APPLICATION

Sec. 84.0021. CONTENTS OF APPLICATION FOR PARTICIPANT IN ADDRESS CONFIDENTIALITY ...

Sec. 84.003. SIGNING APPLICATION BY WITNESS; ASSISTING APPLICANT

Sec. 84.004. UNLAWFULLY WITNESSING APPLICATION FOR MORE THAN ONE APPLICAN...

Sec. 84.0041. FRAUDULENT USE OF APPLICATION FOR BALLOT BY MAIL

Sec. 84.005. APPLICATION COMPONENTS

Sec. 84.007. SUBMITTING APPLICATION FOR BALLOT VOTED BY MAIL: GENERAL RU...

Sec. 84.008. SUBMITTING APPLICATION FOR BALLOT VOTED BY MAIL: PERSONAL D...

Sec. 84.009. SUBMITTING APPLICATION FOR BALLOT VOTED BY MAIL: CONFINEMEN...

Sec. 84.010. PRESERVATION OF APPLICATION

Sec. 84.011. OFFICIAL APPLICATION FORM

Sec. 84.0111. DISTRIBUTION OF APPLICATION FORM

Sec. 84.012. CLERK TO MAIL APPLICATION FORM ON REQUEST

Sec. 84.0121. CLERK TO POST APPLICATION FORM ONLINE

Sec. 84.013. APPLICATION FORMS FURNISHED BY SECRETARY OF STATE

Sec. 84.014. ACTION BY EARLY VOTING CLERK ON CERTAIN APPLICATIONS

Sec. 84.031. CANCELLATION OF APPLICATION

Sec. 84.032. REQUEST FOR CANCELLATION

☒ TEXAS CONSTITUTION

☒ TEXAS STATUTES



# Available Support



**WEBINARS**



**TRAINING**



**RESOURCES**

[elections@sos.texas.gov](mailto:elections@sos.texas.gov)

800-252-VOTE • 512-463-5650

[sos.texas.gov](http://sos.texas.gov)